

NOTES:

- FOR EQUIPMENT LAYOUT PLAN, SEE DWG# 2350-E101.
- FOR FOUNDATION DETAILS, SEE DWG# 2350-C02 TO 2350-C06.
- FOR GRADING DRAWING, REFER TO DWG#2350-CXXX.

DESIGN PARAMETER:

- FOUNDATION DESIGN IS BASED ON THE GEOTECHNICAL INVESTIGATION REPORT FOR ALMONTE BESS BY GEI, REF.#2400227; DATED ON FEBRUARY 28,2024.
- FOUNDATION DESIGN PARAMETERS :
 - RECOMMENDED BEARING CAPACITY FOR FOUNDATION ON BEDROCK IS 500kPa AT SLS AND A FACTORED GEOTECHNICAL RESISTANCE AT USL OF 500kPa.
 - FOR FOUNDATION PLACED ON GRANULAR BACKFILL, GRANULAR FILL SHALL BE GRANULAR A OR B COMPACTED TO 100% SPMD WITH MAX. LIFT OF 200mm AND EXTEND 2m FROM ALL INFRASTRUCTURE AND SLOPE DOWN TO THE EXPOSED BEDROCK SURFACE AT AT 2H:1V SLOPE WITH ADEQUATE EROSION PORTECTION.
 - FROST DEPTH IS 1.2m BELOW GRADE.
 - WATER TABLE IS AT 0.44m BLG.
 - SITE CLASS IS CLASS 'B' IN ACCORDANCE WITH OBC LATEST VERSION.

MATERIAL & CONSTRUCTION NOTES:

- CONCRETE MATERIAL DESIGN, TESTING AND CONSTRUCTION SHALL BE IN ACCORDANCE WITH CSA STANDARD CSA A23 SERIES, LATEST VERSION.
- CONCRETE SPECIFICATION

SUPPLY AND DELIVERY OF CONCRETE SHALL BE AS FOLLOW:

 - MINIMUM COMPRESSION STRENGTH: 30MPA AT 28 DAYS.
 - PORTLAND CEMENT: TYPE GU PORTLAND CEMENT, EXPOSURE CLASS F-1.
 - MAXIMUM SIZE OF AGGREGATE: 14mm TO 20mm.
 - 5%-8% AIR CONTENT.
 - SLUMP RANGE: 75mm±20mm.
 - MIN. 3 CYLINDERS TESTING WITH ONE AT 7 DAYS AND TWO AT 28 DAYS ARE REQUIRED.
- UNLESS OTHERWISE SPECIFIED, MINIMUM CONCRETE COVER TO REINFORCEMENT SHALL BE AS FOLLOWS:
 - CONCRETE CAST AGAINST SOIL = 75mm(3")
 - FORMED CONCRETE WITH DIRECT CONTACT TO SOIL = 50mm(2")
 - CONCRETE SURFACE EXPOSED TO WEATHER = 50mm(2")
 - ALL EXPOSED EDGES OF CONCRETE SHALL HAVE 25mm(1") CHAMFER UNLESS OTHERWISE NOTED.
- REINFORCING STEEL SHALL BE DEFORMED STEEL BAR WITH MINIMUM YIELD STRENGTH OF 400MPA(60KSI) AND CONFORMING TO CSA G30.18 GR.400.
- MINIMUM SPLICES, LAPS AND HOOKS SHALL BE IN ACCORDANCE WITH CSA A23.3-14.
- ALL EXCAVATIONS SHALL BE PERFORMED IN A MANNER THAT SHALL ENSURE PROPER DRAINAGE DURING THE COURSE OF WORK. FLOODED EXCAVATIONS SHALL BE DEWATERED AND ALL MUCK SHALL BE REMOVED BEFORE PROCEEDING WITH WORK. ALL EXCAVATIONS SHALL BE SUFFICIENTLY SUPPORTED TO PREVENT COLLAPSE.
- PRIOR TO THE PLACEMENT OF CONCRETE, BOTTOM OF FOUNDATIONS SHALL BE INSPECTED BY QUALIFIED GEOTECHNICAL PERSONNEL TO CONFIRM THAT THE SOIL PROPERTIES COMPLY WITH THE GEOTECHNICAL INVESTIGATION REPORT.
- BEFORE PLACING CONCRETE, CONTRACTOR SHALL VERIFY ANCHOR BOLTS AND LOCATIONS OF ALL MECHANICAL, UTILITY SERVICES FOR EMBEDDED ITEMS, HOLES, ETC.
- PROPER VIBRATION METHODS SHALL BE USED DURING CONCRETING.
- CONCRETE AFTER POURING SHALL BE ADEQUATE CURED MIN. 7 DAYS BY ADDITIONAL MOISTURE AND/OR COVERED BY WATER RETAINING MATERIAL.
- MIN. 200mm OF GRANULAR A COMPACTED TO 100% SPMD SHALL BE PLACED BEFORE PLACING INSULATION AND SHALL BE PLACED UNDERNEATH THE SLAB-ON-GRADE FOUNDATION U.N.O.

FOUNDATION T.O.C ELEVATION SCHEDULE

FOUNDATION TYPE	TOTAL REQ'D	T.O.C. EL. (m)	RELAVENT DRAWING NO.	RELATED STRUCTURE
F01	4	139.95	2350-C02	BATTERY RACK FOUNDATION (DOUBLE)
F02	1	140.00	2350-C03	TRANSFORMER FOUNDATION
F03	1	140.00	2350-C03	AUXILIARY PANELS SUPPORT FOUNDATION
F04	1	139.96	2350-C03	44kV 3Ø L.A. & TERM. SUPPORT FOUNDATION
F05	1	139.96	2350-C04	44kV TRANS-RUPTER TRS. SUPPORT FOUNDATION
F06	1	139.90	2350-C04	44kV 3Ø C.T. & V.T. COMBOS SUPPORT FOUNDATION
F07	1	139.90	2350-C04	44kV DISC. SWITCH SUPPORT FOUNDATION
FP01	1	139.43	2308-EC-02	45FT CLASS G CONCRETE POLE FOUNDATION
FP02	1	139.60	2308-EC-02	45FT CLASS G CONCRETE POLE FOUNDATION

TO BE CONFIRMED

60% REVIEW



ENG. SEAL

REV	REMARKS	DATE	DRAWN	CHECKED	APPROVED
A	ISSUED FOR 60% REVIEW	14/05/24	HB	SB	KW

ISSUE FOR REVIEW



Black & McDonald

BLACK & McDONALD LTD.
31 RULMAN CRT.
SCARBOROUGH, ONT.
M1X 1G4
TEL: (416) 291-8200
FAX: (416) 291-2282

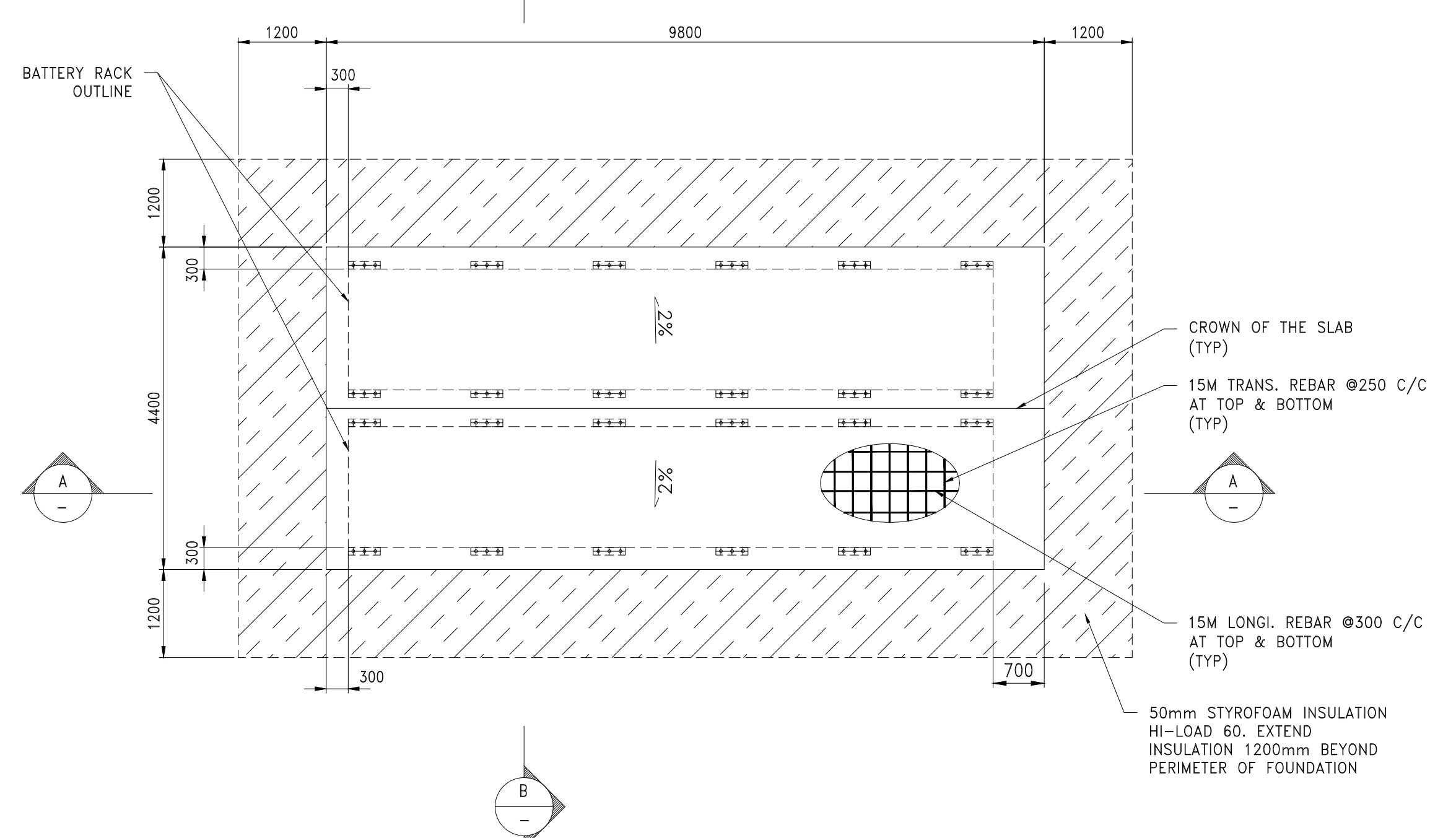
THIS DRAWING IS THE INTELLECTUAL PROPERTY OF BLACK AND McDONALD LIMITED AND IS NOT TO BE LOANED OR REPRODUCED IN ANY WAY WITHOUT THE WRITTEN CONSENT OF BLACK AND McDONALD LIMITED

COMPASS ENERGY ALMONTE BESS

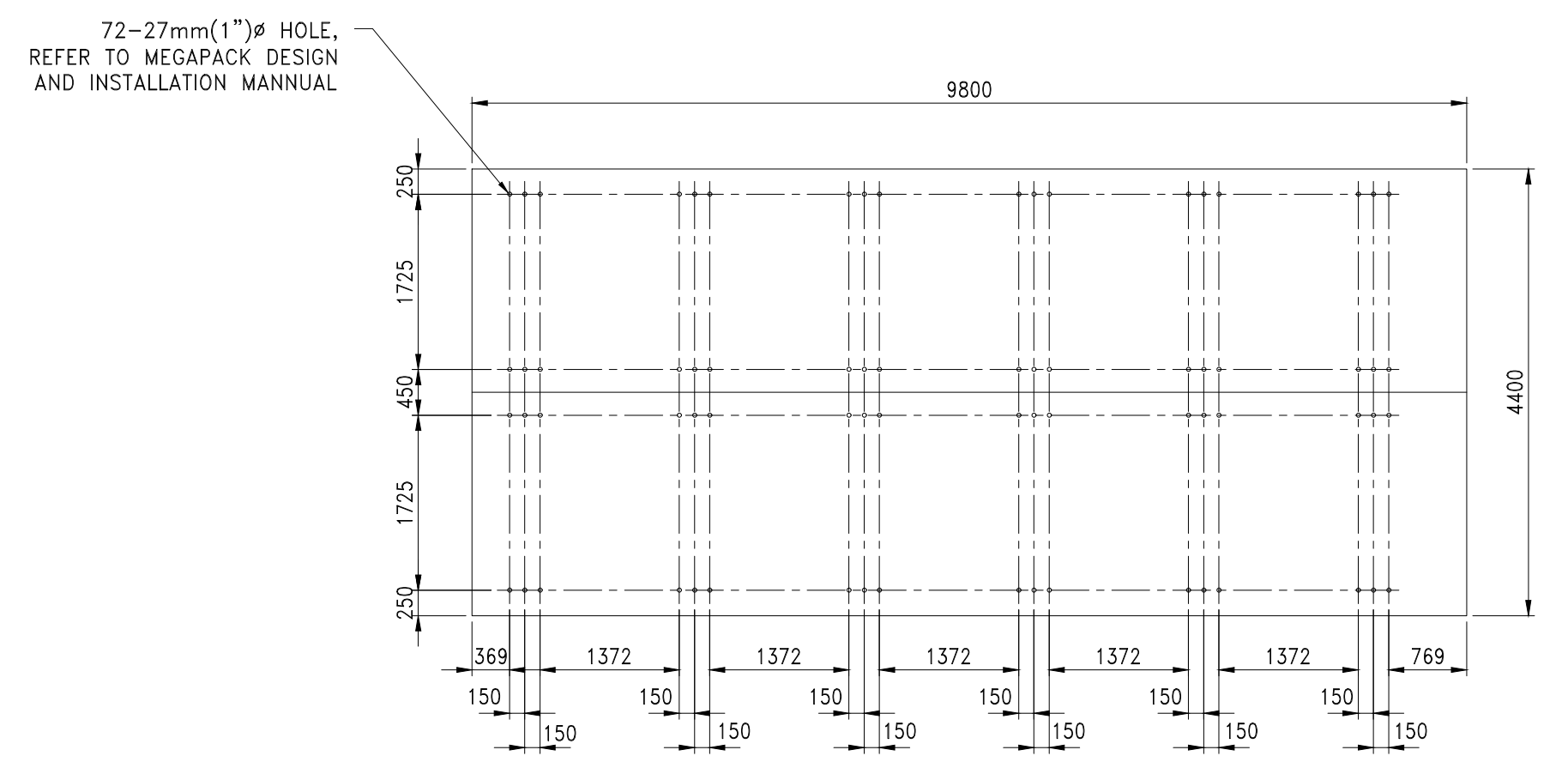
ALMONTE 4.99 MW/19.26 MWh BESS
FOUNDATION LAYOUT PLAN

DRAWING NUMBER		REVISION	SHEET
2350-C101		A	0001
DATE	DRAWN	CHECKED	APPROVED
14/05/2024	HB	VW	KW
SCALE:			SHEET
1:50			0001

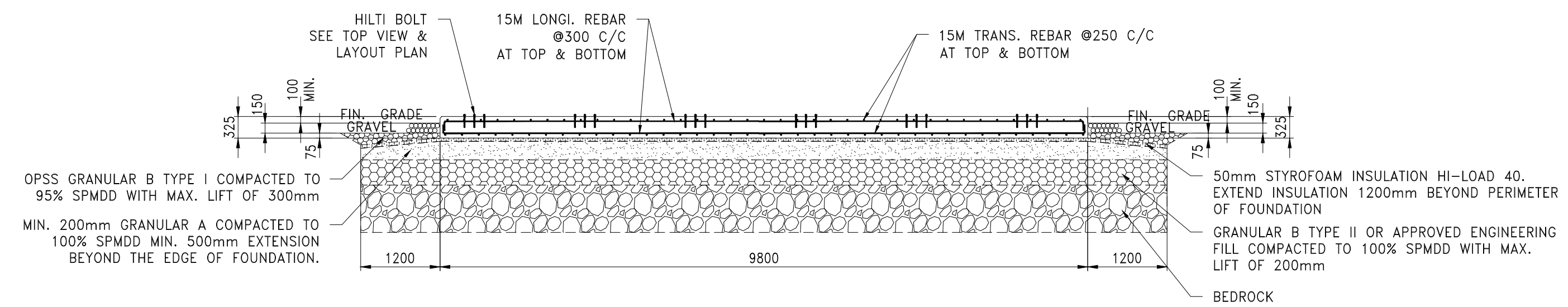
- NOTES:
1. ALL DIMENSIONS AS SHOWN ARE METRIC IN MILLIMETRE UNLESS NOTED OTHERWISE.
 2. FOR EQUIPMENT LAYOUT PLAN & SECTION VIEW, SEE DWG# 2350-E01~E02.
 3. FOR FOUNDATION LAYOUT PLAN, CONSTRUCTION NOTES, SEE DWG# 2350-C01.



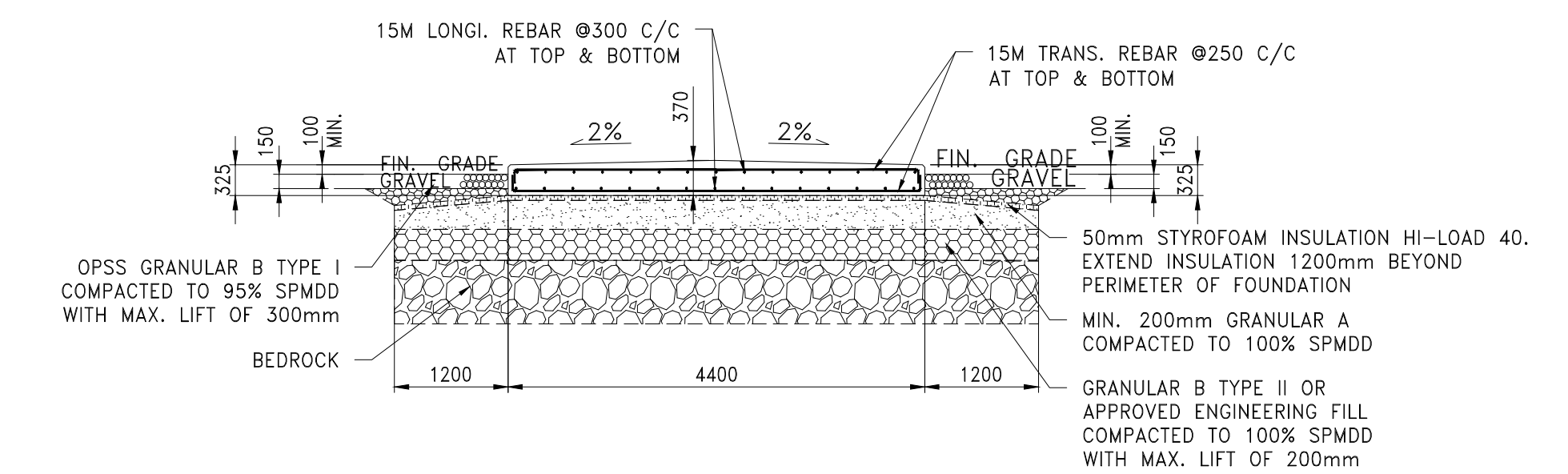
TOP VIEW



ANCHOR BOLT PATTERN
(TO BE CONFIRMED, PENDING ON FINAL INFORMATION)



SECTION A-A



SECTION B-B

60% REVIEW

F01 – BATTERY RACK FOUNDATION (DOUBLE)

(TOTAL 4 REQUIRED EACH)
(ALL OPENING & SLEEVES TO BE ADVISED, PENDING ON FINAL EQUIPMENT & CONDUIT ROUTING INFORMATION)
(PENDING ON CONDUITS LOCATION INPUT)

A	ISSUED FOR 60% REVIEW	14/05/24	HB	SB	KW
REV	REMARKS	DATE	DRAWN	CHECKED	APPROVED

ISSUE FOR REVIEW



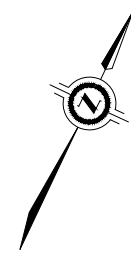
BLACK & McDONALD LTD.
31 RULMAN CRT.
SCARBOROUGH, ONT.
M1X 1G4
TEL: (416) 291-8200
FAX: (416) 291-2282

THIS DRAWING IS THE INTELLECTUAL PROPERTY OF BLACK AND McDONALD LIMITED AND IS NOT TO BE LOANED OR REPRODUCED IN ANY WAY WITHOUT THE WRITTEN CONSENT OF BLACK AND McDONALD LIMITED

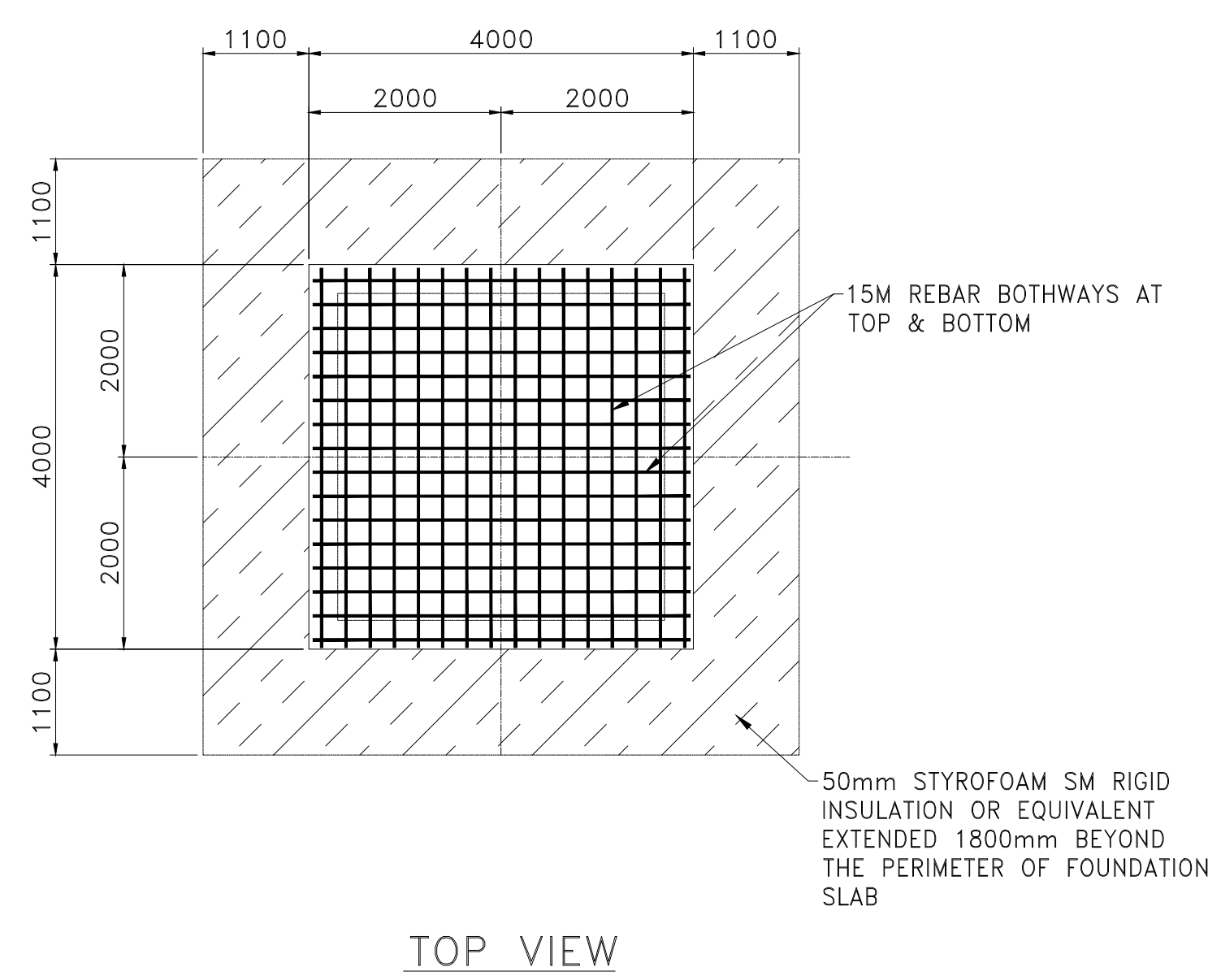
COMPASS ENERGY ALMONTE BESS					
ALMONTE 4.99 MW/19.26 MWh BESS F01a & F01b BATTERY RACK FOUNDATION DETAILS (DOUBLE)					
CLIENT DRAWING NUMBER					
DRAWING NUMBER	2350-C102	REVISION	A	SHEET	0001
DATE	14/05/2024	DRAWN	HB	CHECKED	VW
		APPROVED	KW	SCALE	1:50



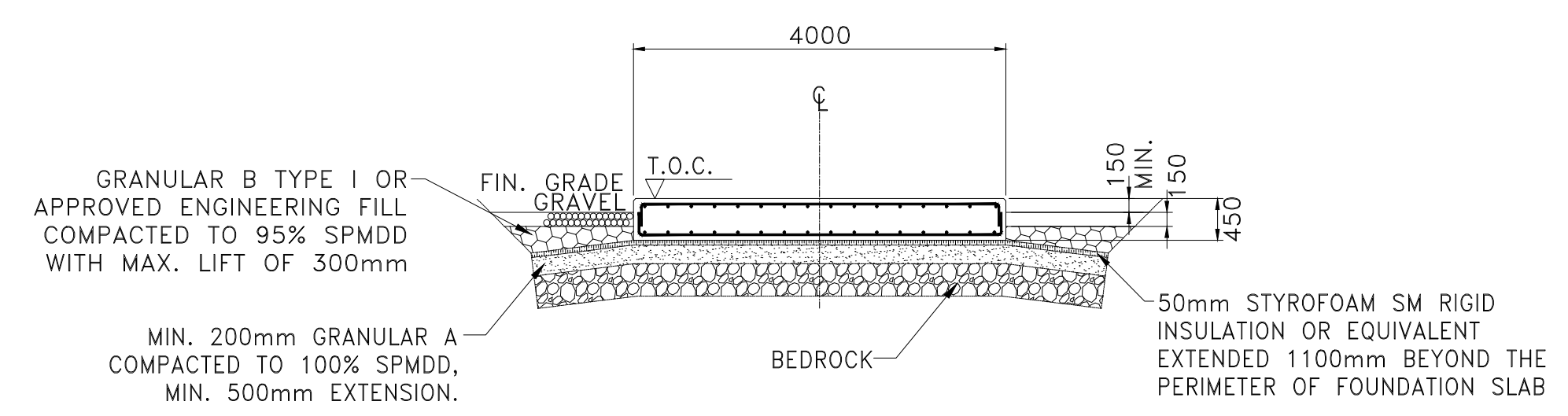
ENG. SEAL



- NOTES:
1. ALL DIMENSIONS AS SHOWN ARE METRIC IN MILLIMETRE UNLESS NOTED OTHERWISE.
 2. FOR EQUIPMENT LAYOUT PLAN & SECTION VIEW, SEE DWG# 2350-E01~E02.
 3. FOR FOUNDATION LAYOUT PLAN, CONSTRUCTION NOTES, SEE DWG# 2350-C01.

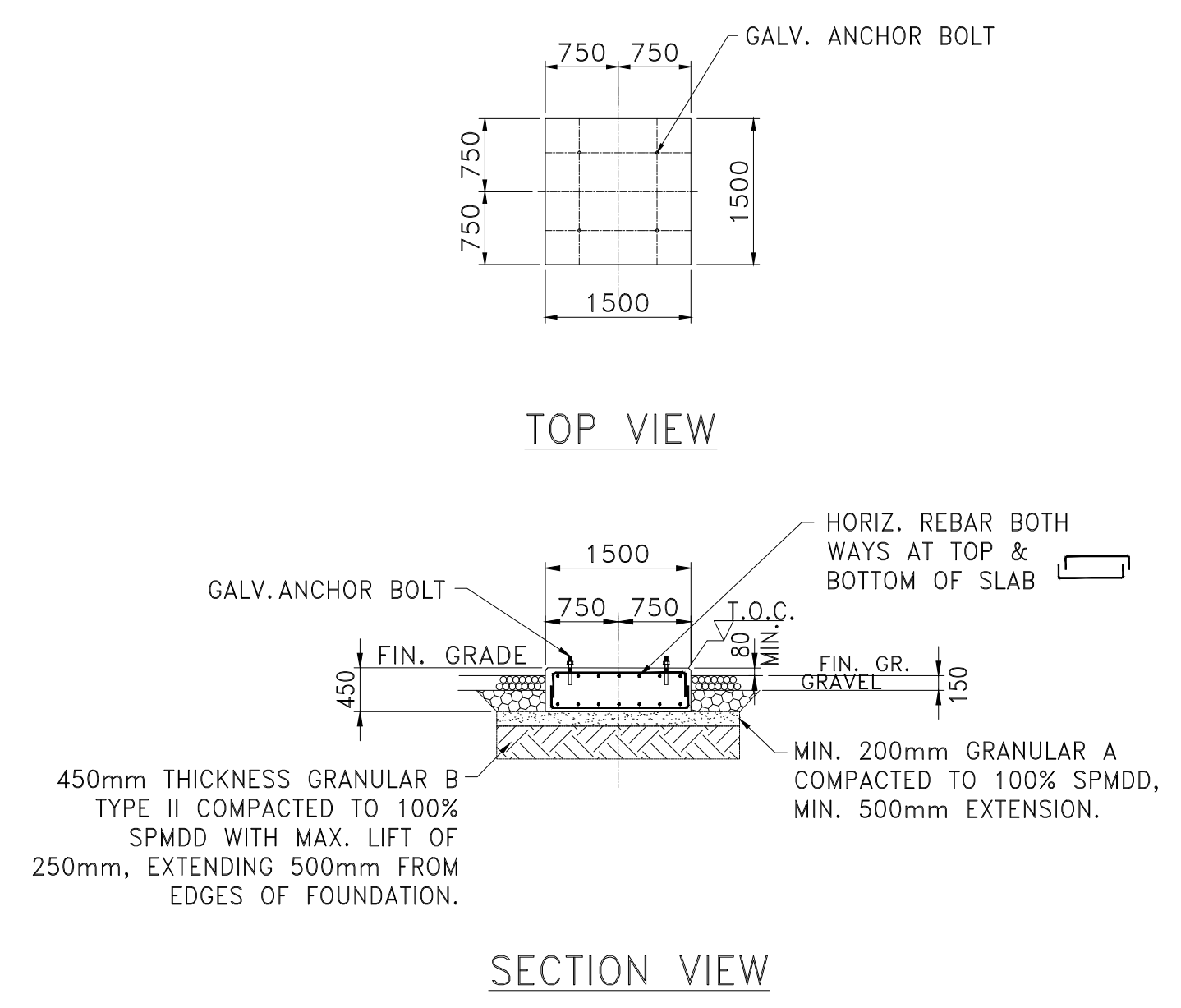


TOP VIEW



SECTION VIEW

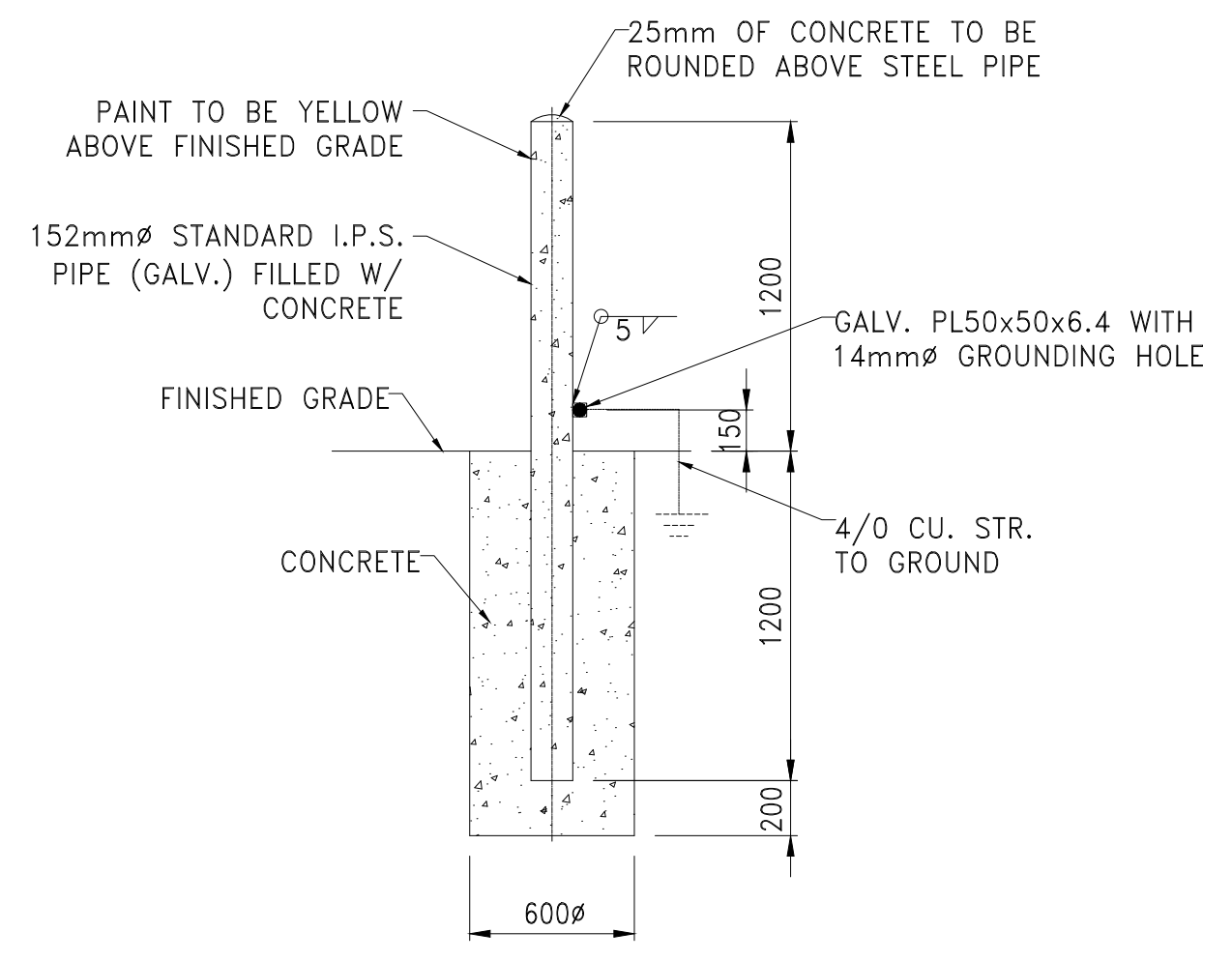
F02 - TRANSFORMER FOUNDATION
(TOTAL 1 REQUIRED)
(PENDING ON FINAL EQUIPMENT INFORMATION)



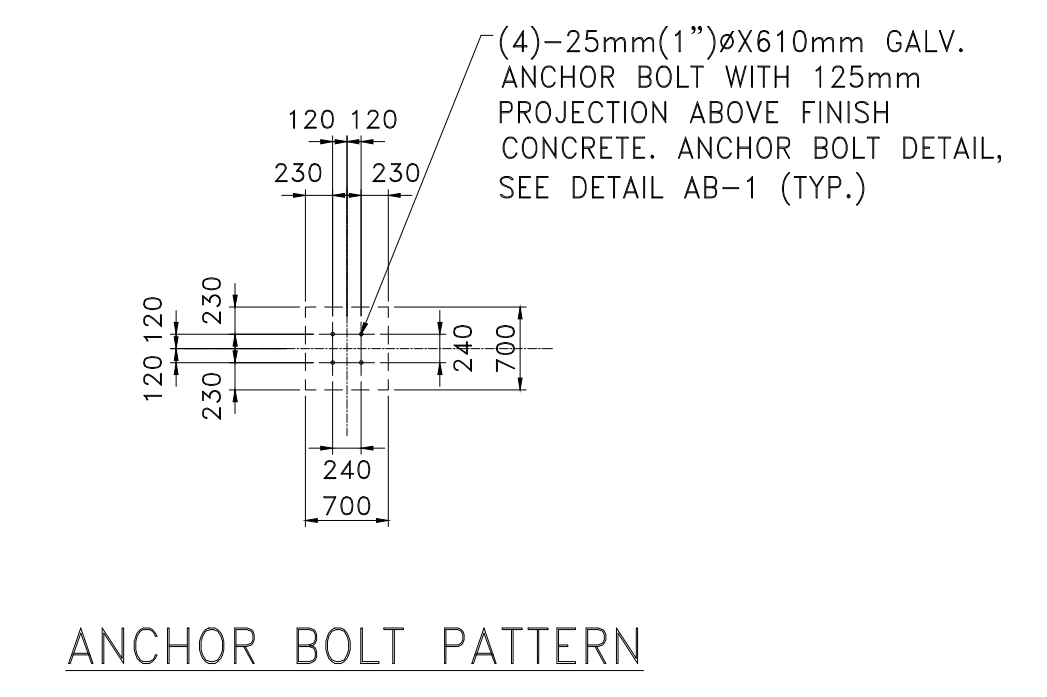
TOP VIEW

SECTION VIEW

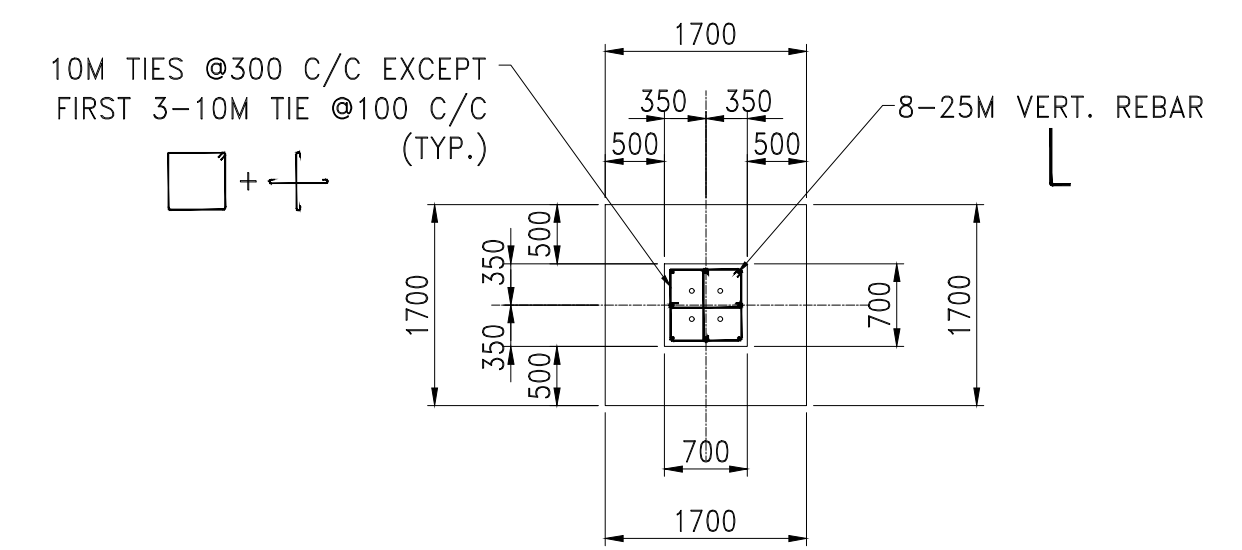
F03 - AUXILIARY PANELS SUPPORT FOUNDATION
(TOTAL 1 REQUIRED)
(PENDING ON FINAL EQUIPMENT INFORMATION)



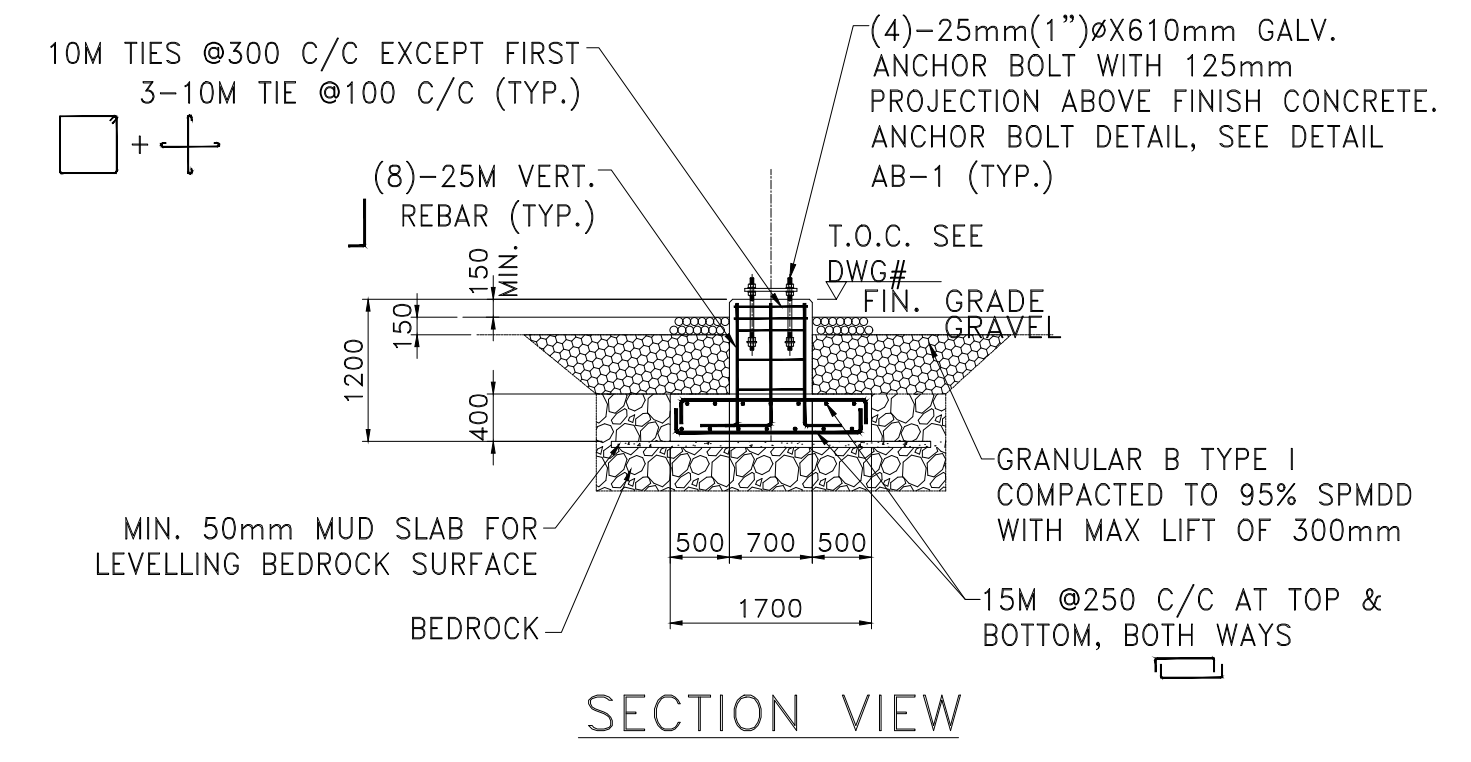
TYPICAL BOLLARD DETAIL
(TOTAL 5 REQ'D)



ANCHOR BOLT PATTERN

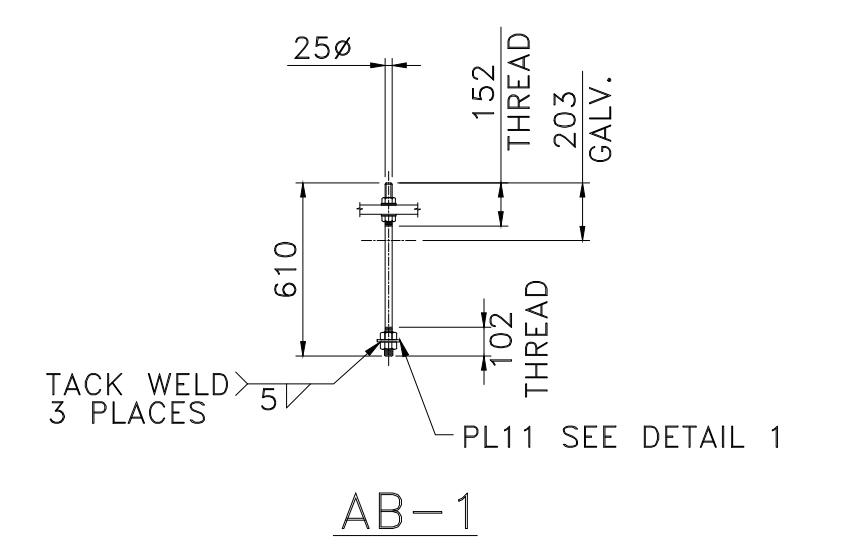


TOP VIEW



SECTION VIEW

F04 - 44KV 3 ϕ L.A. AND TERMINATION SUPPORT FOUNDATION
(TOTAL 1 REQUIRED)



AB-1

25mm(1") ϕ X610mm GALV. ANCHOR BOLT

TOP THREAD LENGTH = 152mm(6")

TOP GALV. LENGTH = 203mm(8")

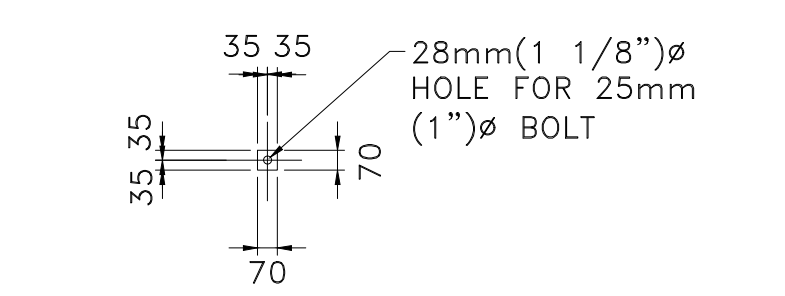
BOTTOM THREAD LENGTH = 102mm(4")

C/W 4 HEX NUTS & 2 FLAT WASHERS ASTM F1554 GR.55 OR EQUIVALENT

MIN. YIELD STRENGTH = 379MPa

MIN. TENSILE STRENGTH = 517MPa

TOTAL 8 ANCHOR BOLT REQUIRED



PL11-7.9x70x70
DETAIL 1

REV	ISSUED FOR 60% REVIEW	14/05/24	HB	SB	KW
	REMARKS	DATE	DRAWN	CHECKED	APPROVED

ISSUE FOR REVIEW



BLACK & MCDONALD LTD.
31 RULMAN CRT.
SCARBOROUGH, ONT.
M1X 1S6
TEL: (416) 291-8200
FAX: (416) 291-2282

THIS DRAWING IS THE INTELLECTUAL PROPERTY OF BLACK AND MCDONALD LIMITED AND IS NOT TO BE LOANED OR REPRODUCED IN ANY WAY WITHOUT THE WRITTEN CONSENT OF BLACK AND MCDONALD LIMITED

COMPASS ENERGY ALMONTE BESS

ALMONTE 4.99 MW/19.26 MWh BESS
F03, F04, BOLLARD FOUNDATION DETAILS & ANCHOR BOLT DETAIL

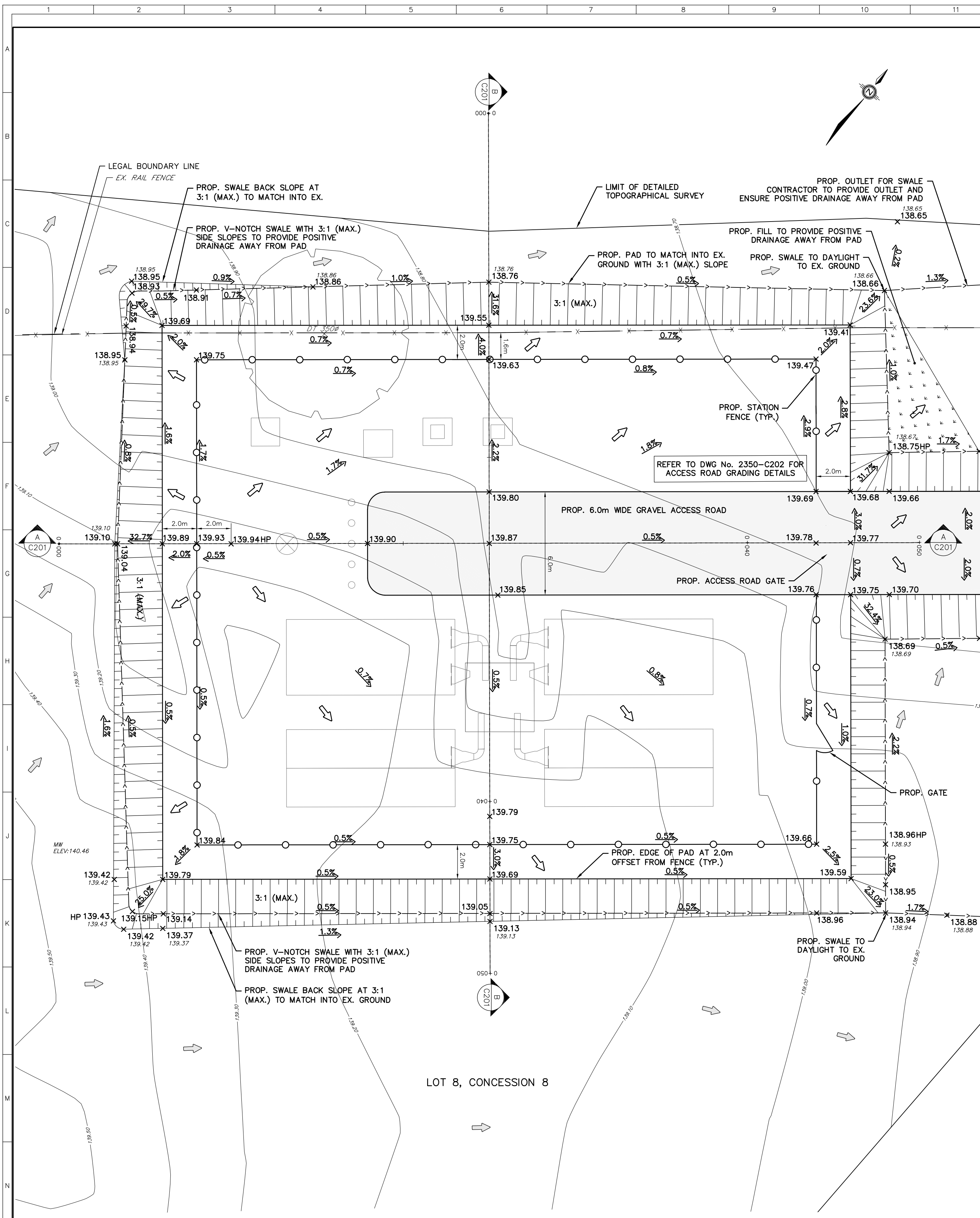
CLIENT DRAWING NUMBER XXXX

DRAWING NUMBER	2350-C103	REVISION	A	SHEET	0001
DATE	14/05/2024	DRAWN	HB	CHECKED	VW
APPROVED:	KW	SCALE:	1:50		

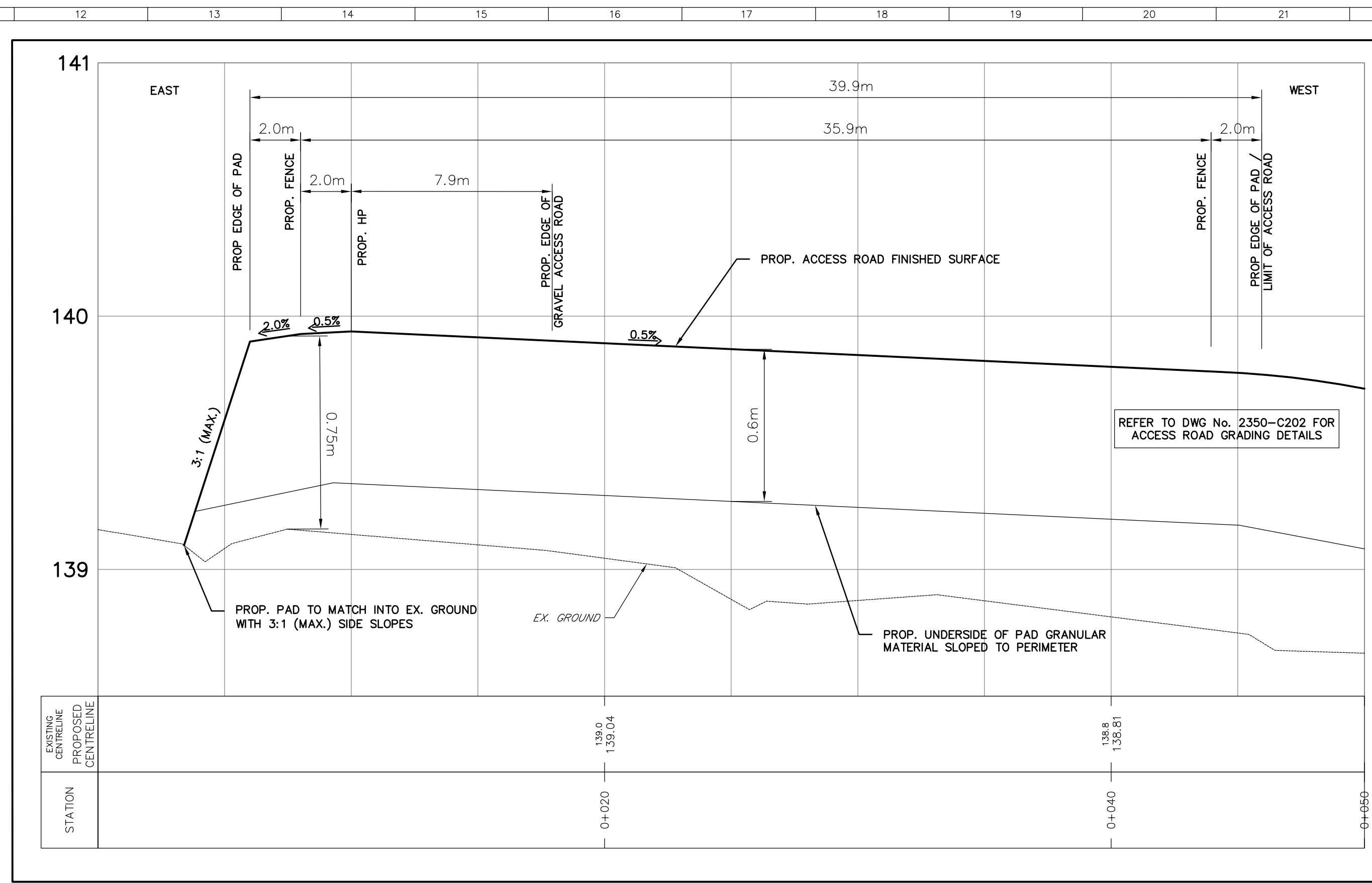
60% REVIEW



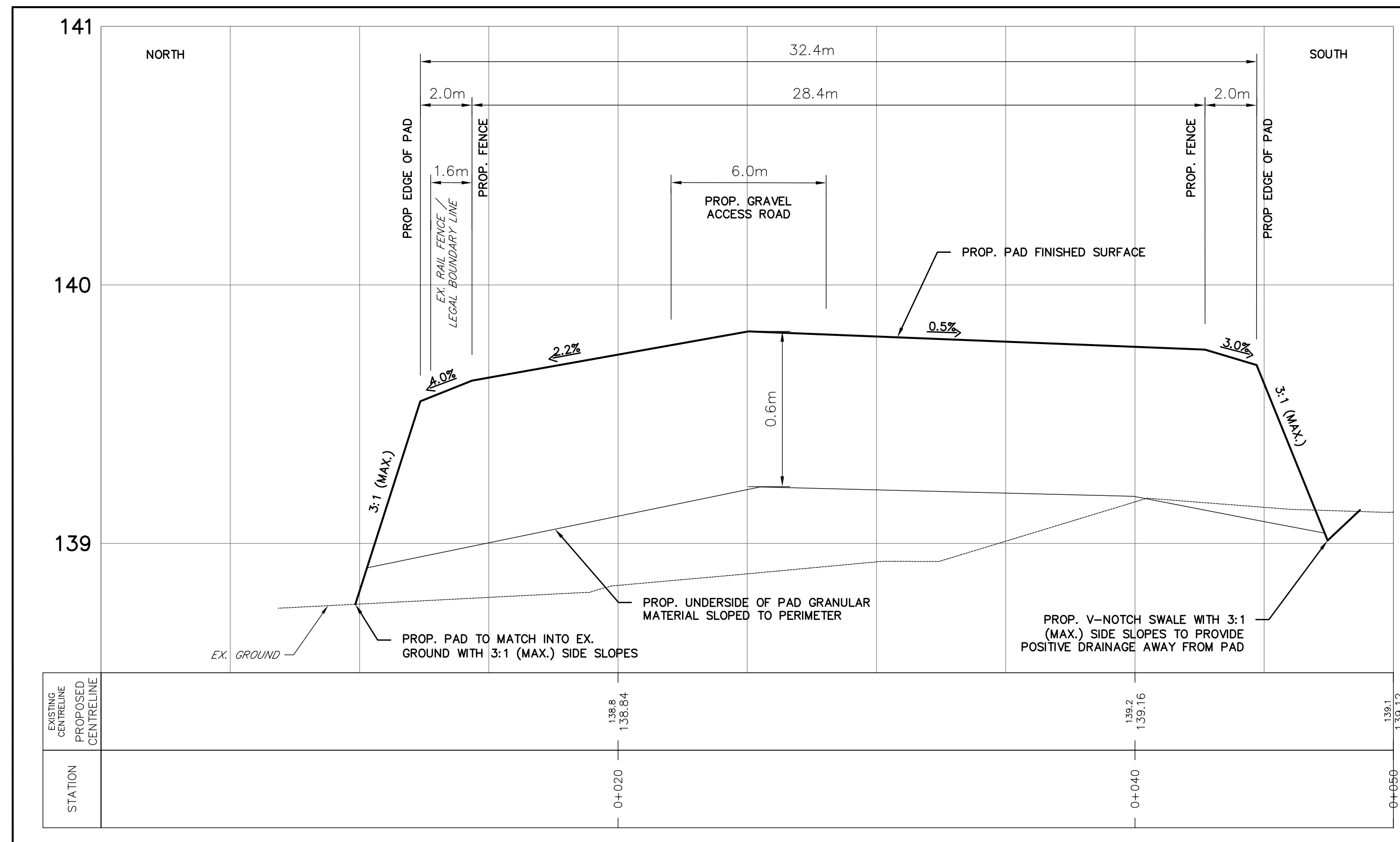
ENG. SEAL



PLAN VIEW
SCALE: 1:150



CROSS-SECTION DETAIL A: EAST-WEST
SCALE: H 1:150 V 1:15



CROSS-SECTION DETAIL B: NORTH-SOUTH
SCALE: H 1:150 V 1:15

- NOTES:**
- ALL DIMENSIONS ARE IN METERS UNLESS OTHERWISE NOTED.
 - THE TOPOGRAPHICAL AND LEGAL SURVEY INFORMATION HAS BEEN TAKEN FROM THE PLAN ILLUSTRATING TOPOGRAPHICAL INFORMATION ON PART OF LOT 8 CONCESSION 8, GEOGRAPHIC TOWNSHIP OF RAMSAY, MUNICIPALITY OF MISSISSIPPI MILLS, COUNTY OF LANARK, PROVIDED BY GEORGE N. BRACKEN, ONTARIO LAND SURVEYOR, REFERENCE No. 24-2281.
 - ELEVATIONS SHOWN HEREON ARE GEODETIC (CGVD-1928: 1978) AND ARE DERIVED FROM THE CANNET VRS NETWORK STATION CARLETON PLACE, ELEVATION = 144.59m
 - SURVEY BENCHMARK
- MAG NAIL IN ROOT OF 0.40m BASSWOOD TREE HAVING AN ELEVATION OF 140.03m
- MAG NAIL IN 0.60m OAK TREE HAVING AN ELEVATION OF 139.82m
 - THE STATION INFORMATION HAS BEEN TAKEN FROM THE ALMONTE 4.99 MW BESS SITE LAYOUT PLAN, PREPARED BY CHIMAX INC., DRAWING No. 2350-E01.

LEGEND

- x 194.19 PROPOSED ELEVATION
- 194.19 EXISTING ELEVATION
- 1.0% PROPOSED DRAINAGE FLOW DIRECTION AND GRADIENT
- 2.2% EXISTING DRAINAGE FLOW DIRECTION AND GRADIENT
- PROPOSED SLOPE (3:1 MAX.)
- PROPOSED FENCE
- EXISTING FENCE
- PROPOSED DITCH
- EXISTING DITCH
- EXISTING GAS LINE
- 09-1 EXISTING BOREHOLE NUMBER AND LOCATION
- 44.50 EXISTING CONTOUR AND ELEVATION
- OH OH EXISTING OVERHEAD HYDRO LINES
- EXISTING DIRECTION OF OVERLAND FLOW
- PROPOSED DRAINAGE FLOW DIRECTION
- PROPOSED RIP-RAP
- A E102 CROSS-SECTION LOCATION AND REFERENCE PLAN

60% REVIEW

REV.	ISSUED FOR REVIEW	REMARKS	DATE	PCED CAD	JP	JP
A	ISSUED FOR REVIEW		22/05/2024	PCED CAD	JP	JP

ISSUE FOR REVIEW



Black & McDonald

BLACK & McDONALD LTD.
31 FULLMAN CRT.
SCARBOROUGH, ONT.
M1X 1E4
TEL: (416) 291-8200
FAX: (416) 291-2092

THIS DRAWING IS THE INTELLECTUAL PROPERTY OF BLACK AND McDONALD LIMITED AND IS NOT TO BE LOANED OR REPRODUCED IN ANY WAY WITHOUT THE WRITTEN CONSENT OF BLACK AND McDONALD LIMITED

COMPASS ENERGY ALMONTE BESS

ALMONTE 4.99 MW BESS
SITE GRADING PLAN

CLIENT DRAWING NUMBER

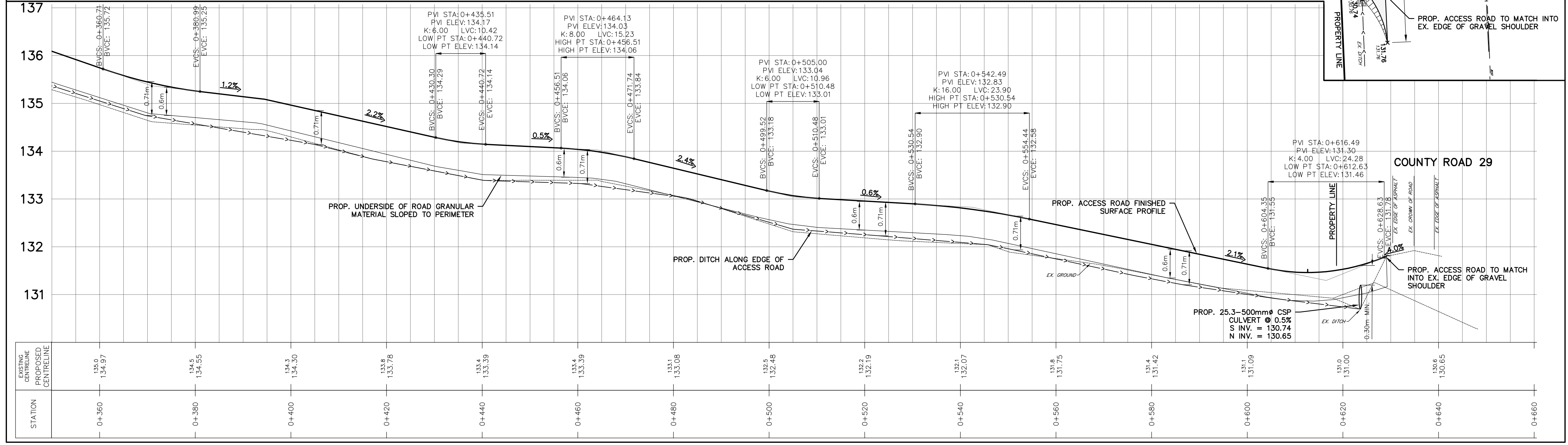
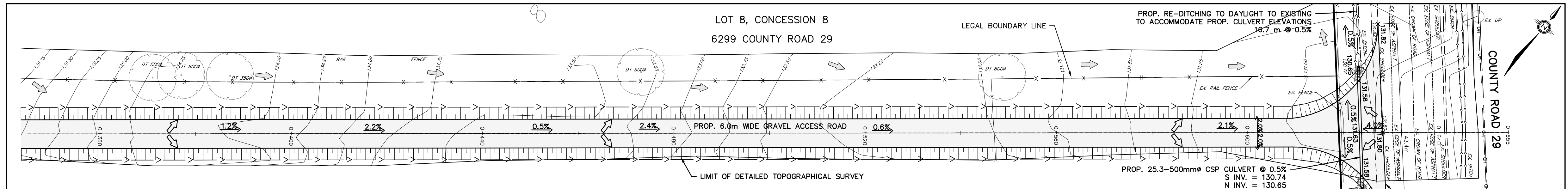
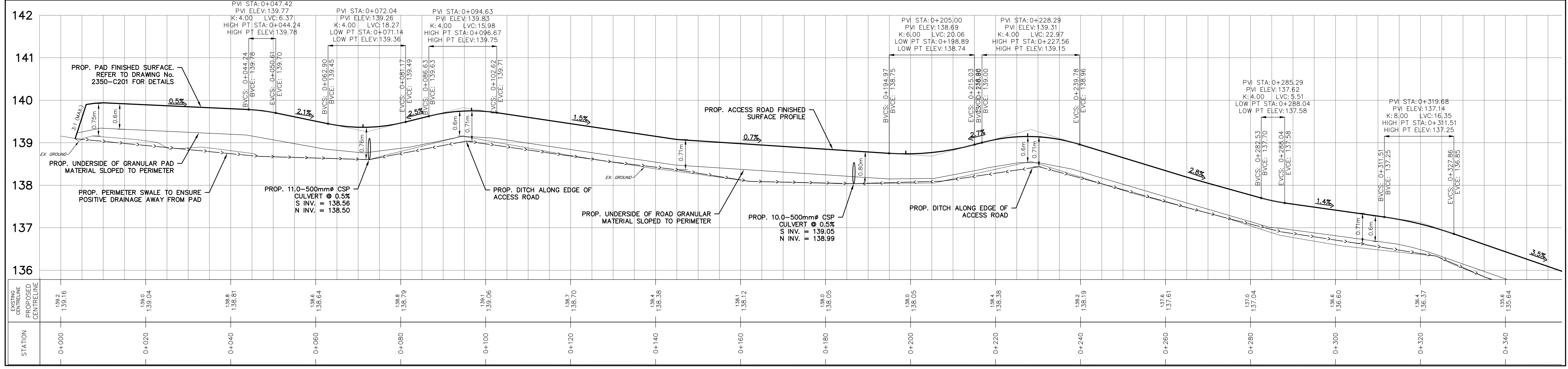
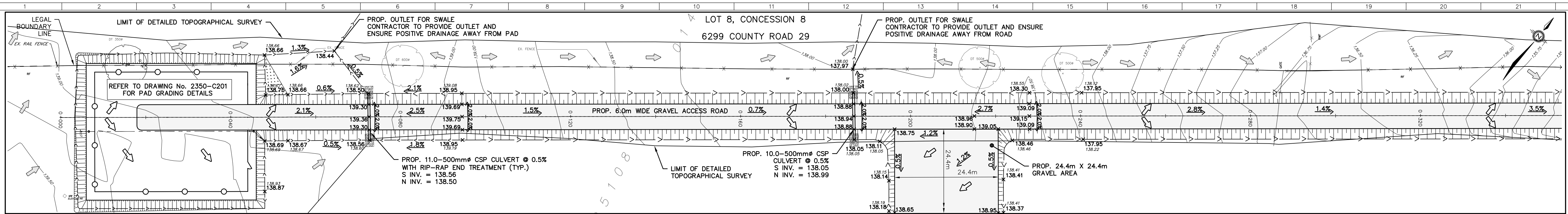
DRAWING NUMBER 2350-C201 REVISION A SHEET 1

DATE 04/04/2024 DRAWN: PCED CAD CHECKED: JP APPROVED: JP SCALE: AS SHOWN

PARKER CONSULTING ENGINEERS LTD.



ENG. SEAL



- NOTES:
- ALL DIMENSIONS ARE IN METERS UNLESS OTHERWISE NOTED.
 - THE TOPOGRAPHICAL AND LEGAL SURVEY INFORMATION HAS BEEN TAKEN FROM THE PLAN ILLUSTRATING TOPOGRAPHICAL INFORMATION ON PART OF LOT 8 CONCESSION 8, GEOGRAPHIC TOWNSHIP OF RAMSAY, MUNICIPALITY OF MISSISSIPPI MILLS, COUNTY OF LANARK, PROVIDED BY GEORGE N. BRACKEN, ONTARIO LAND SURVEYORS, REFERENCE NO. 24-2281. ELEVATIONS SHOWN HEREON ARE GEODETIC (CGVD-1928: 1978) AND ARE DERIVED FROM THE CANNET VRS NETWORK STATION CARLETON PLACE, ELEVATION = 144.59m
 - SURVEY BENCHMARK - MAG NAIL IN ROOT OF 0.40m BASSWOOD TREE HAVING AN ELEVATION OF 140.03m - MAG NAIL IN 0.60m OAK TREE HAVING AN ELEVATION OF 139.82m
 - THE STATION INFORMATION HAS BEEN TAKEN FROM THE ALMONTE 4.99 MW BESS SITE LAYOUT PLAN, PREPARED BY CHIMAX INC., DRAWING NO. 2350-E01.

LEGEND

---	LEGAL BOUNDARY LINE
---	PROPOSED ELEVATION
---	EXISTING ELEVATION
---	PROPOSED DRAINAGE FLOW DIRECTION AND GRADIENT
---	EXISTING DRAINAGE FLOW DIRECTION AND GRADIENT
---	PROPOSED SLOPE (3:1 MAX.)
---	PROPOSED FENCE
---	EXISTING FENCE
---	PROPOSED DITCH
---	EXISTING DITCH
---	EXISTING GAS LINE
---	EXISTING BOREHOLE NUMBER AND LOCATION
---	EXISTING CONTOUR AND ELEVATION
---	EXISTING OVERHEAD HYDRO LINES
---	EXISTING DIRECTION OF OVERLAND FLOW
---	PROPOSED DRAINAGE FLOW DIRECTION
---	PROPOSED RIP-RAP

60% REVIEW

REV.	REMARKS	DATE	DRAWN	CHECKED	APPROVED
C	GRAVEL AREA UPDATED	27/06/2024	PCEL CAD	JP	JP
B	ACCESS ROAD GRAVEL AREA ADDED	20/06/2024	PCEL CAD	JP	JP
A	ISSUED FOR REVIEW	22/05/2024	PCEL CAD	JP	JP

ISSUE FOR REVIEW



PARKER CONSULTING ENGINEERS LTD.

THIS DRAWING IS THE INTELLECTUAL PROPERTY OF BLACK AND MCDONALD LIMITED AND IS NOT TO BE LOANED OR REPRODUCED IN ANY WAY WITHOUT THE WRITTEN CONSENT OF BLACK AND MCDONALD LIMITED

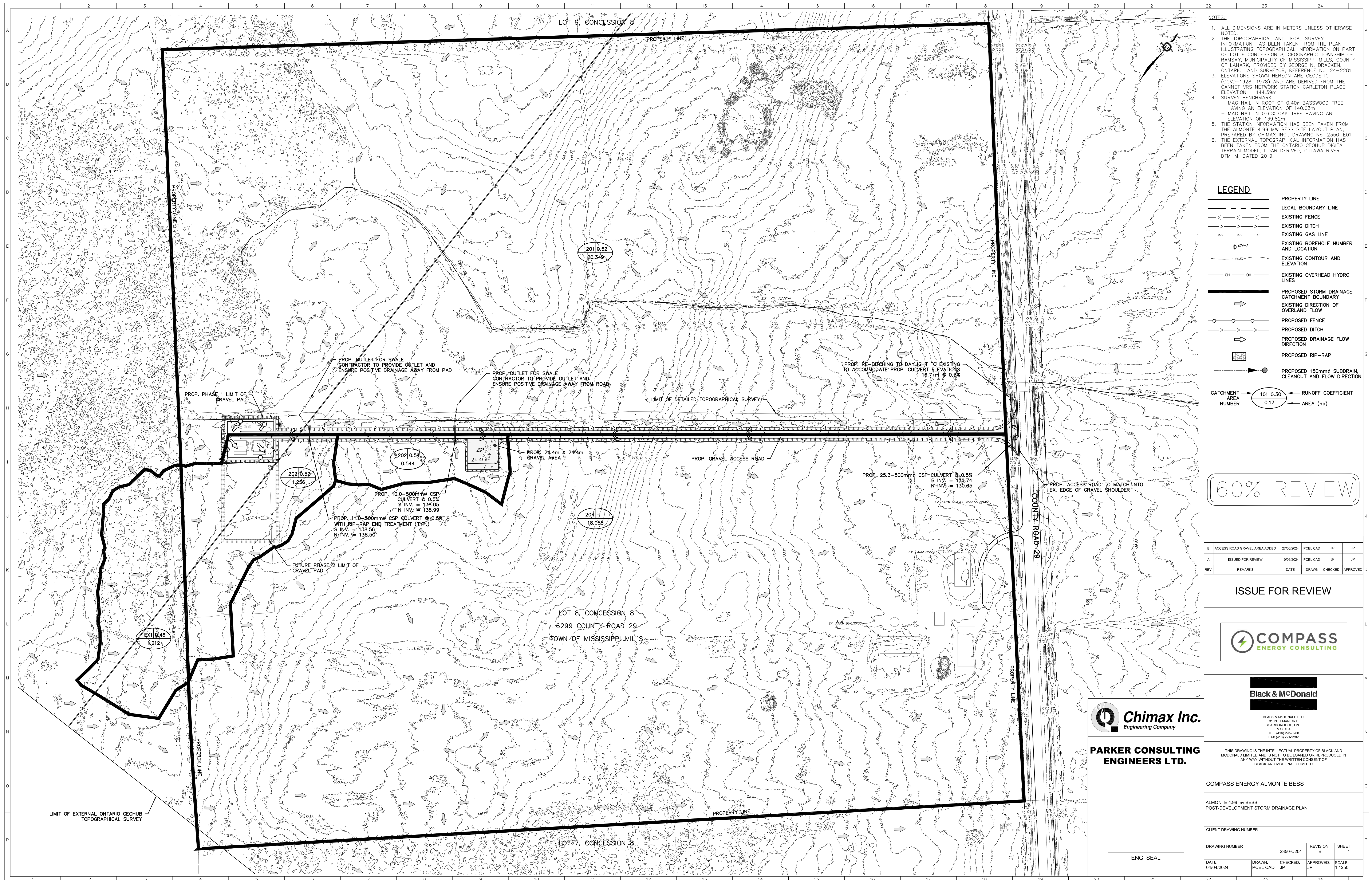
COMPASS ENERGY ALMONTE BESS

ALMONTE 4.99 MW BESS ACCESS ROAD GRADING PLAN

CLIENT DRAWING NUMBER 42110045-CIV-GRAD-0002

DRAWING NUMBER 2350-C202 REVISION C SHEET 1

DATE 04/04/2024 DRAWN/PCEL CAD CHECKED/JP APPROVED/JP SCALE: H1:500 V1:25



- NOTES:**
- ALL DIMENSIONS ARE IN METERS UNLESS OTHERWISE NOTED.
 - THE TOPOGRAPHICAL AND LEGAL SURVEY INFORMATION HAS BEEN TAKEN FROM THE PLAN ILLUSTRATING TOPOGRAPHICAL INFORMATION ON PART OF LOT 8 CONCESSION 8, GEOGRAPHIC TOWNSHIP OF RAMSAY, MUNICIPALITY OF MISSISSIPPI MILLS, COUNTY OF LANARK, PROVIDED BY GEORGE N. BRACKEN, ONTARIO LAND SURVEYOR, REFERENCE No. 24-2281.
 - ELEVATIONS SHOWN HEREON ARE GEODETIC (CGVD-1928: 1978) AND ARE DERIVED FROM THE CANNET VRS NETWORK STATION CARLETON PLACE, ELEVATION = 144.59m
 - SURVEY BENCHMARK
 - MAG NAIL IN ROOT OF 0.40m BASSWOOD TREE HAVING AN ELEVATION OF 140.03m
 - MAG NAIL IN 0.60m OAK TREE HAVING AN ELEVATION OF 139.82m
 - THE STATION INFORMATION HAS BEEN TAKEN FROM THE ALMONTE 4.99 MW BESS SITE LAYOUT PLAN, PREPARED BY CHIMAX INC., DRAWING No. 2350-E01.
 - THE EXTERNAL TOPOGRAPHICAL INFORMATION HAS BEEN TAKEN FROM THE ONTARIO GEHUB DIGITAL TERRAIN MODEL, LIDAR DERIVED, OTTAWA RIVER DTM-M, DATED 2019.

LEGEND

	PROPERTY LINE
	LEGAL BOUNDARY LINE
	EXISTING FENCE
	EXISTING DITCH
	EXISTING GAS LINE
	EXISTING BOREHOLE NUMBER AND LOCATION
	EXISTING CONTOUR AND ELEVATION
	EXISTING OVERHEAD HYDRO LINES
	PROPOSED STORM DRAINAGE CATCHMENT BOUNDARY
	EXISTING DIRECTION OF OVERLAND FLOW
	PROPOSED FENCE
	PROPOSED DITCH
	PROPOSED DRAINAGE FLOW DIRECTION
	PROPOSED RIP-RAP
	PROPOSED 150mm# SUBDRAIN, CLEANOUT AND FLOW DIRECTION
	CATCHMENT AREA NUMBER
	RUNOFF COEFFICIENT
	AREA (ha)

60% REVIEW

B	ACCESS ROAD GRAVEL AREA ADDED	27/06/2024	PCEL CAD	JP	JP
A	ISSUED FOR REVIEW	10/06/2024	PCEL CAD	JP	JP
REV.	REMARKS	DATE	DRAWN	CHECKED	APPROVED

ISSUE FOR REVIEW



PARKER CONSULTING ENGINEERS LTD.

THIS DRAWING IS THE INTELLECTUAL PROPERTY OF BLACK AND MCDONALD LIMITED AND IS NOT TO BE LOANED OR REPRODUCED IN ANY WAY WITHOUT THE WRITTEN CONSENT OF BLACK AND MCDONALD LIMITED

COMPASS ENERGY ALMONTE BESS

ALMONTE 4.99 mw BESS
POST-DEVELOPMENT STORM DRAINAGE PLAN

CLIENT DRAWING NUMBER

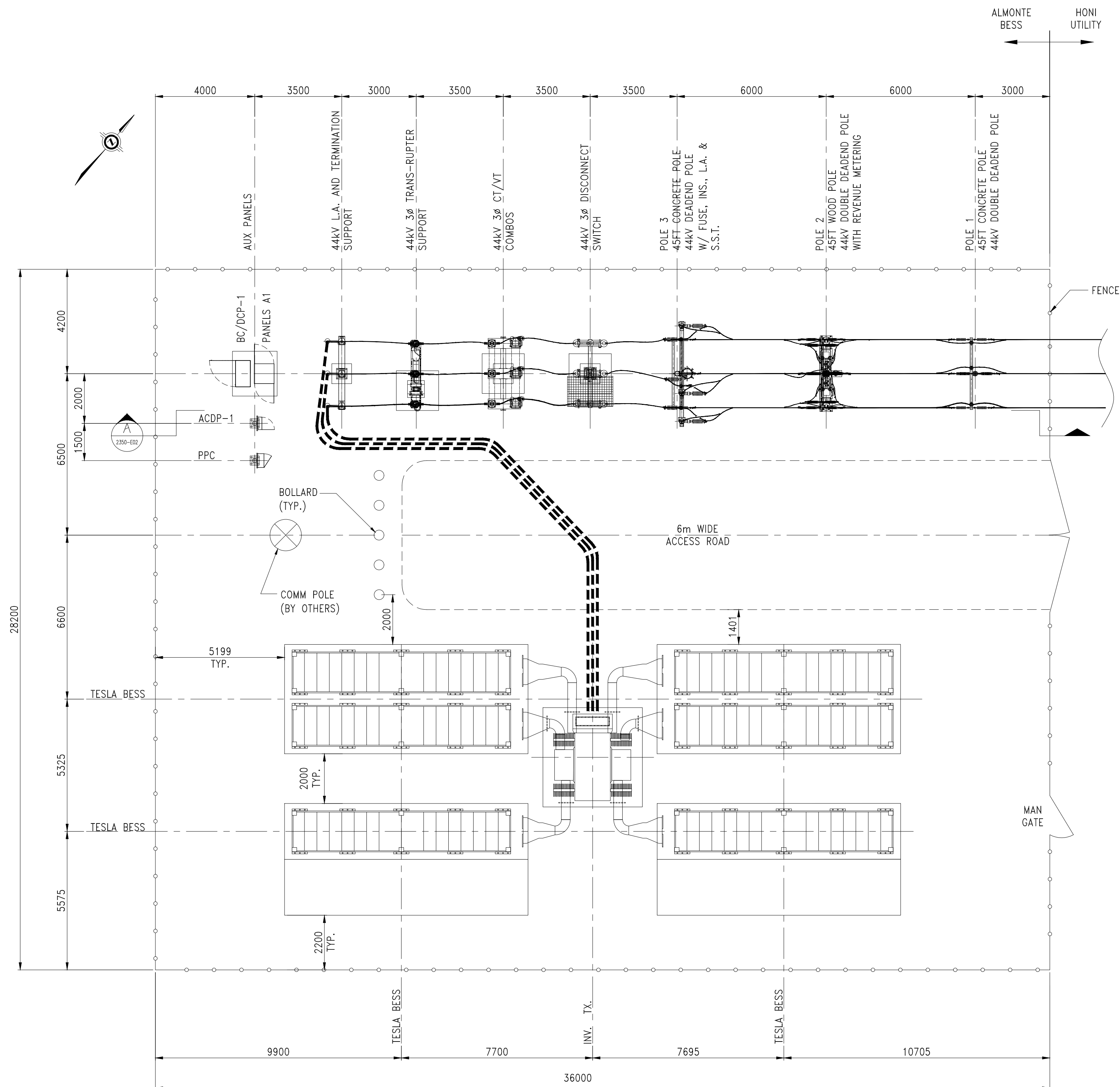
DRAWING NUMBER	2350-C204	REVISION	B	SHEET	1
----------------	-----------	----------	---	-------	---

DATE	04/04/2024	DRAWN	PCEL CAD	CHECKED	JP	APPROVED	JP	SCALE	1:1250
------	------------	-------	----------	---------	----	----------	----	-------	--------

ENG. SEAL

NOTES:

1. FOR FOUNDATION LAYOUT PLAN, SEE DWG# 2350-C01.
2. FOR SECTION VIEW, SEE DWG# 2350-E02.
3. FOR BILL OF MATERIALS, SEE DWG# 2350-E03.
4. ALL DIMENSIONS AS SHOWN ARE METRIC IN MILLIMETRE UNLESS NOTED OTHERWISE.



SUBSTATION/BESS LAYOUT PLAN

60% REVIEW



ENG. SEAL

REV.	REMARKS	DATE	DRAWN	CHECKED	APPROVED
D	ADDED NEWER ACDP-1, PPC, BC/DCP-1 & PANEL A1	05/31/2024	HB	SB	KW
C	ISSUE FOR REVIEW	05/14/2024	HB	SB	KW
B	ISSUE FOR REVIEW	04/19/2024	EH	SB	KW
A	PRELIMINARY ISSUE	03/20/2024	HB	SB	KW

ISSUE FOR REVIEW

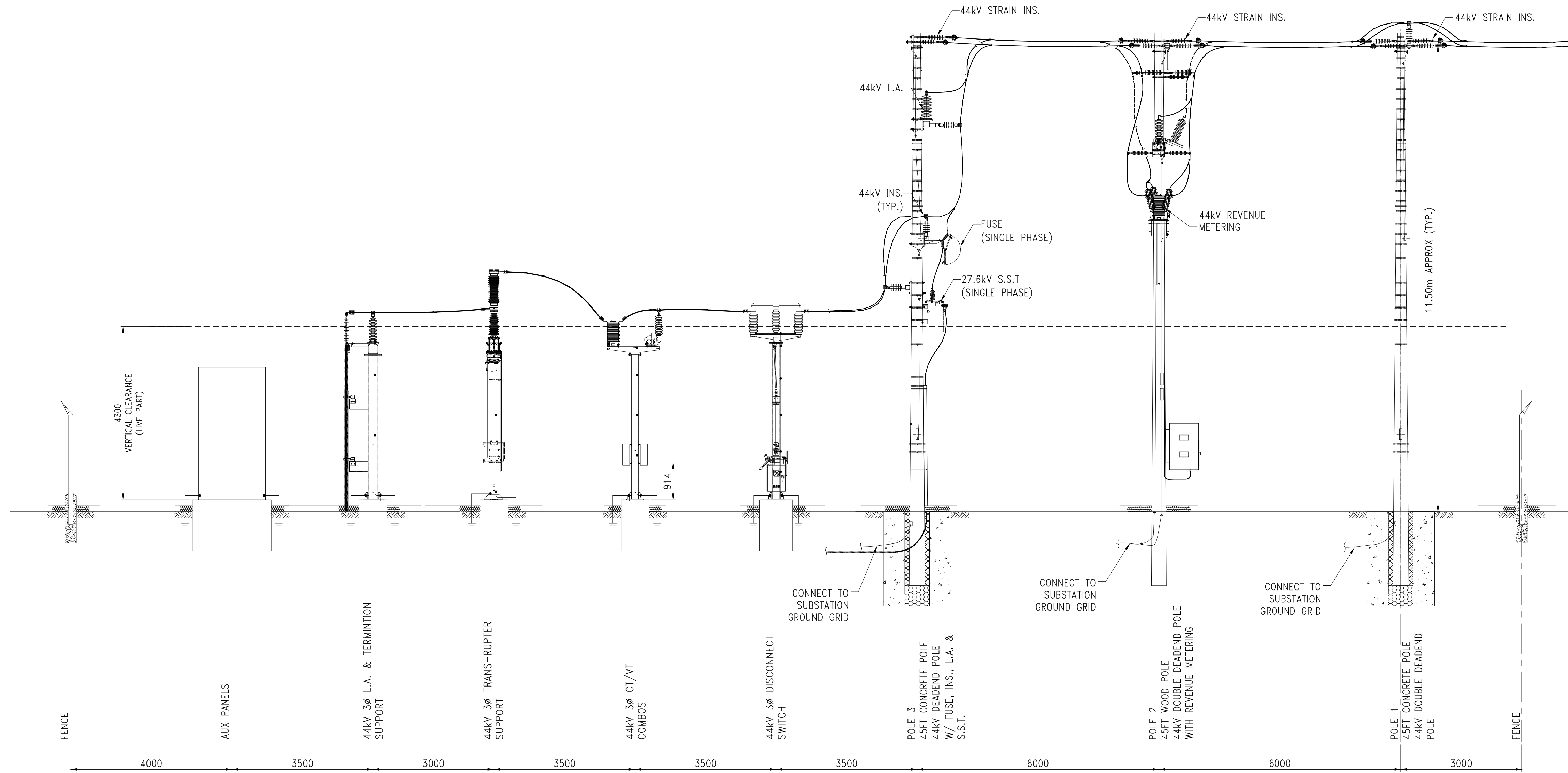


BLACK & McDONALD LTD.
31 RULLMAN CRT.
SCARBOROUGH, ONT.
M1X 1S4
TEL: (416) 291-8200
FAX: (416) 291-2282

THIS DRAWING IS THE INTELLECTUAL PROPERTY OF BLACK AND McDONALD LIMITED AND IS NOT TO BE LOANED OR REPRODUCED IN ANY WAY WITHOUT THE WRITTEN CONSENT OF BLACK AND McDONALD LIMITED.

COMPASS ENERGY ALMONTE BESS					
ALMONTE 4.99 MV BESS SUBSTATION / BESS LAYOUT PLAN					
CLIENT DRAWING NUMBER					
DRAWING NUMBER	2350-E01	REVISION	D	SHEET	0001
DATE	03/20/2024	DRAWN:	HB	CHECKED:	SB
		APPROVED:	KW	SCALE:	1:100

- NOTES:
1. FOR FOUNDATION LAYOUT PLAN, SEE DWG# 2350-C01.
 2. FOR EQUIPMENT LAYOUT PLAN, SEE DWG# 2350-E01.
 3. FOR BILL OF MATERIALS, SEE DWG# 2350-E03.
 4. ALL DIMENSIONS AS SHOWN ARE METRIC IN MILLIMETRE UNLESS NOTED OTHERWISE.



SECTION A

C	ISSUE FOR REVIEW	05/14/2024	HB	SB	KW
B	ISSUE FOR REVIEW	04/19/2024	EH	SB	KW
A	PRELIMINARY ISSUE	03/20/2024	HB	SB	KW
REV	REMARKS	DATE	DRAWN	CHECKED	APPROVED

ISSUE FOR REVIEW



Black & McDonald

BLACK & McDONALD LTD.
31 RULMAN CRT.
SCARBOROUGH, ONT.
M1X 1G4
TEL: (416) 291-8200
FAX: (416) 291-2282

THIS DRAWING IS THE INTELLECTUAL PROPERTY OF BLACK AND McDONALD LIMITED AND IS NOT TO BE LOANED OR REPRODUCED IN ANY WAY WITHOUT THE WRITTEN CONSENT OF BLACK AND McDONALD LIMITED.

COMPASS ENERGY ALMONTE BESS

ALMONTE 4.99 MV BESS
SECTION VIEW A

CLIENT DRAWING NUMBER

DRAWING NUMBER	2350-E02	REVISION	C	SHEET	0001
DATE	03/20/2024	DRAWN	EH	CHECKED:	SB
		APPROVED:	KW	SCALE:	1:60

60% REVIEW



ENG. SEAL