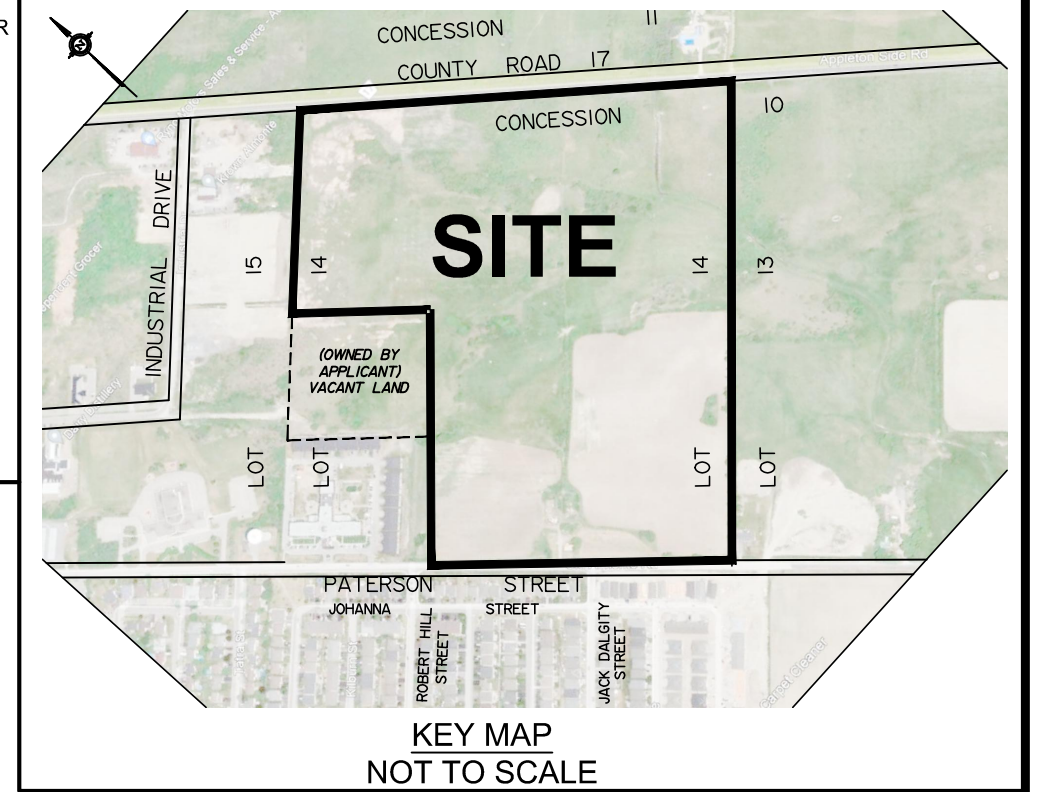


CONCESSION (ROAD ALLOWANCE BETWEEN CONCESSIONS 10 AND 11)

SUBJECT TO THE CONDITIONS, IF ANY, SET FORTH IN OUR LETTER DATED... THIS DRAFT PLAN IS APPROVED BY THE COUNTY OF LANARK UNDER SECTION 51 OF THE PLANNING ACT. THIS ___ DAY OF _____ 20__



REVISION SCHEDULE table with columns: NO., REVISION, DATE, BY. Includes entries for 6x6 Daylights, Added Reserve Blocks, and various updates.

DRAFT PLAN OF SUBDIVISION OF PART OF THE EAST HALF LOT 14 CONCESSION 10 Geographic Township of Ramsay MUNICIPALITY OF MISSISSIPPI MILLS COUNTY OF LANARK

Scale 1 : 1500

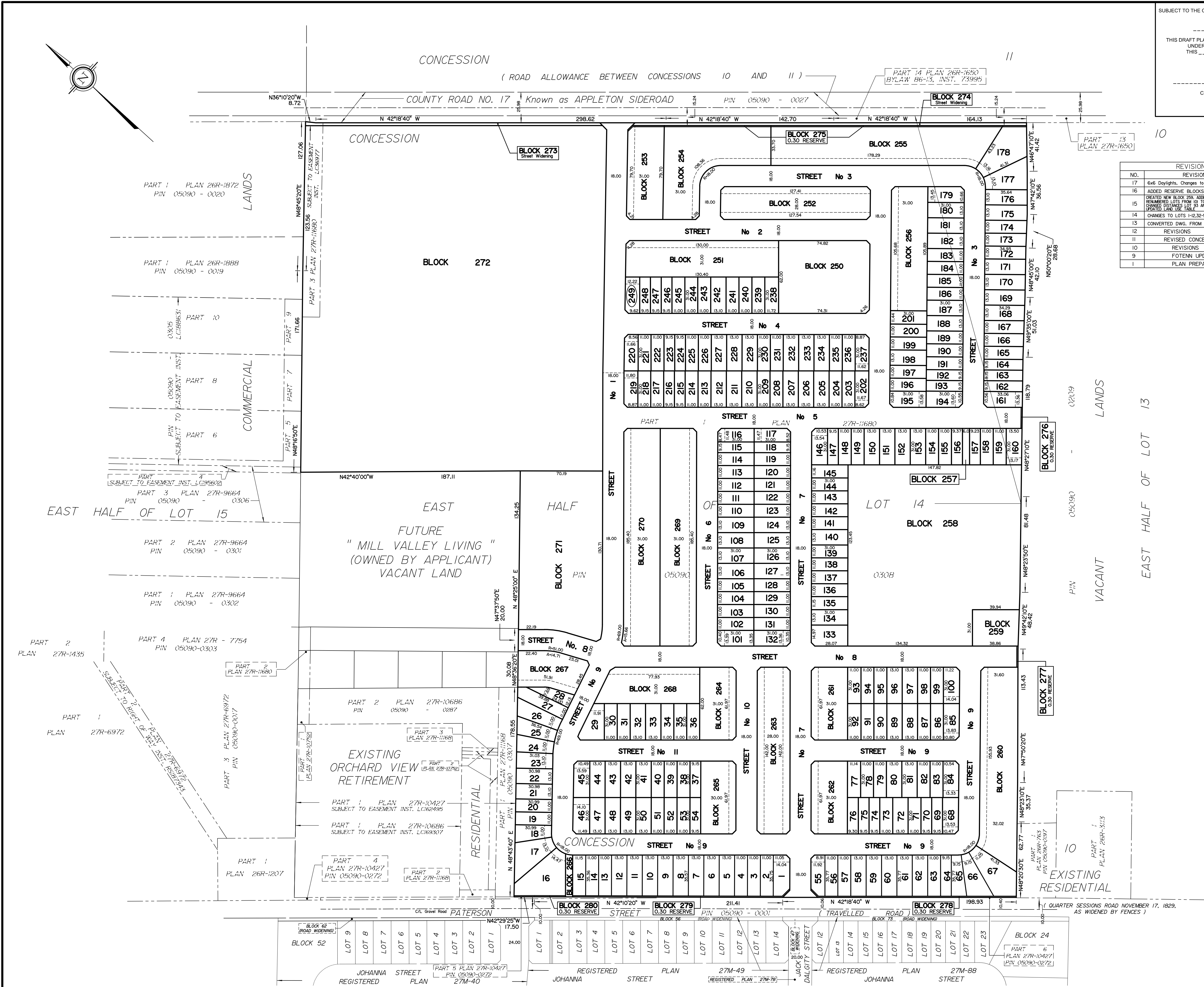
Metric DISTANCES SHOWN ON THIS PLAN ARE IN METRES AND CAN BE CONVERTED TO FEET BY DIVIDING BY 0.3048

SURVEYOR'S CERTIFICATE I CERTIFY THAT: The boundaries of the lands to be subdivided and their relationship to adjoining lands have been accurately and correctly shown.

OWNER'S CERTIFICATE This is to certify that I am the owner / agent of the lands to be subdivided and that this plan was prepared in accordance with my instructions.

ADDITIONAL INFORMATION REQUIRED UNDER SECTION 51-17 OF THE PLANNING ACT (a) see plan (b) see plan (c) see plan (d) see Land use table (e) see plan (f) see plan (g) see plan (h) municipal water supply (i) see soils report (j) see plan (k) sanitary, storm sewers, municipal water, bell, hydro, cable and gas to be available (l) subject to easement per Inst. LC36977 see plan

LAND USE TABLE with columns: LOT \ BLOCK, USE, AREA (Ac), AREA (Ha). Lists various residential and commercial uses with their respective areas.



PART 1 PLAN 26R-1872 PIN 05090 - 0020

PART 1 PLAN 26R-1888 PIN 05090 - 0019

PART 10 L.C. 896-31

PART 8 L.C. 896-31

PART 6 L.C. 896-31

PART 3 PLAN 27R-9664 PIN 05090 - 0306

PART 2 PLAN 27R-9664 PIN 05090 - 0301

PART 1 PLAN 27R-9664 PIN 05090 - 0302

PART 4 PLAN 27R - 7754 PIN 05090-0303

PART 2 PLAN 27R-10686 PIN 05090 - 0287

PART 3 PLAN 27R-10686 PIN 05090-0017

PART 1 PLAN 27R-6972

PART 1 PLAN 27R-10427 PIN 05090-0272

PART 2 PLAN 27R-10686 PIN 05090-0272

PART 1 PLAN 26R-1207

PART 1 PLAN 27R-10427 PIN 05090-0272

PART 2 PLAN 27R-10686 PIN 05090-0272

PART 3 PLAN 27R-10427 PIN 05090-0272

PART 4 PLAN 27R-10427 PIN 05090-0272

PART 5 PLAN 27R-10427 PIN 05090-0272

PART 6 PLAN 27R-10427 PIN 05090-0272