

**Appendix F –  
Zoning By-law Z-04-22**

**THE CORPORATION OF THE MUNICIPALITY OF MISSISSIPPI MILLS**

**BY-LAW NO. 22-XXX**

**BEING** a by-law to amend By-law No. 11-83 being the Zoning By-law for the Municipality of Mississippi Mills.

**WHEREAS** the Council of the Corporation of the Municipality of Mississippi Mills passed Zoning Bylaw 11-83, known as the Zoning By-law, to regulate the development and use of lands within the Municipality;

**NOW THEREFORE** the Council of the Corporation of the Municipality of Mississippi Mills pursuant to Section 34 of the *Planning Act*, R.S.O. 1990, Chapter P.13, enacts as follows:

1. That Schedule 'A' to By-law No. 11-83, as amended, is hereby further amended by changing the zoning of the lands shown on the Zoning Schedule A Ramsay Ward and Zoning Schedule B Pakenham Ward.
2. This By-Law takes effect from the date of passage by Council and comes into force and effect pursuant to the provisions of the *Planning Act*, R.S.O. 1990, Chapter P.13.

**BY-LAW** read, passed, signed and sealed in open Council this **X day of XXX, 20XX**.

\_\_\_\_\_  
Christa Lowry, Mayor

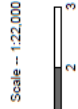
\_\_\_\_\_  
Jeanne Harfield, Clerk

# By-law No. 22-XXX Schedule "A"



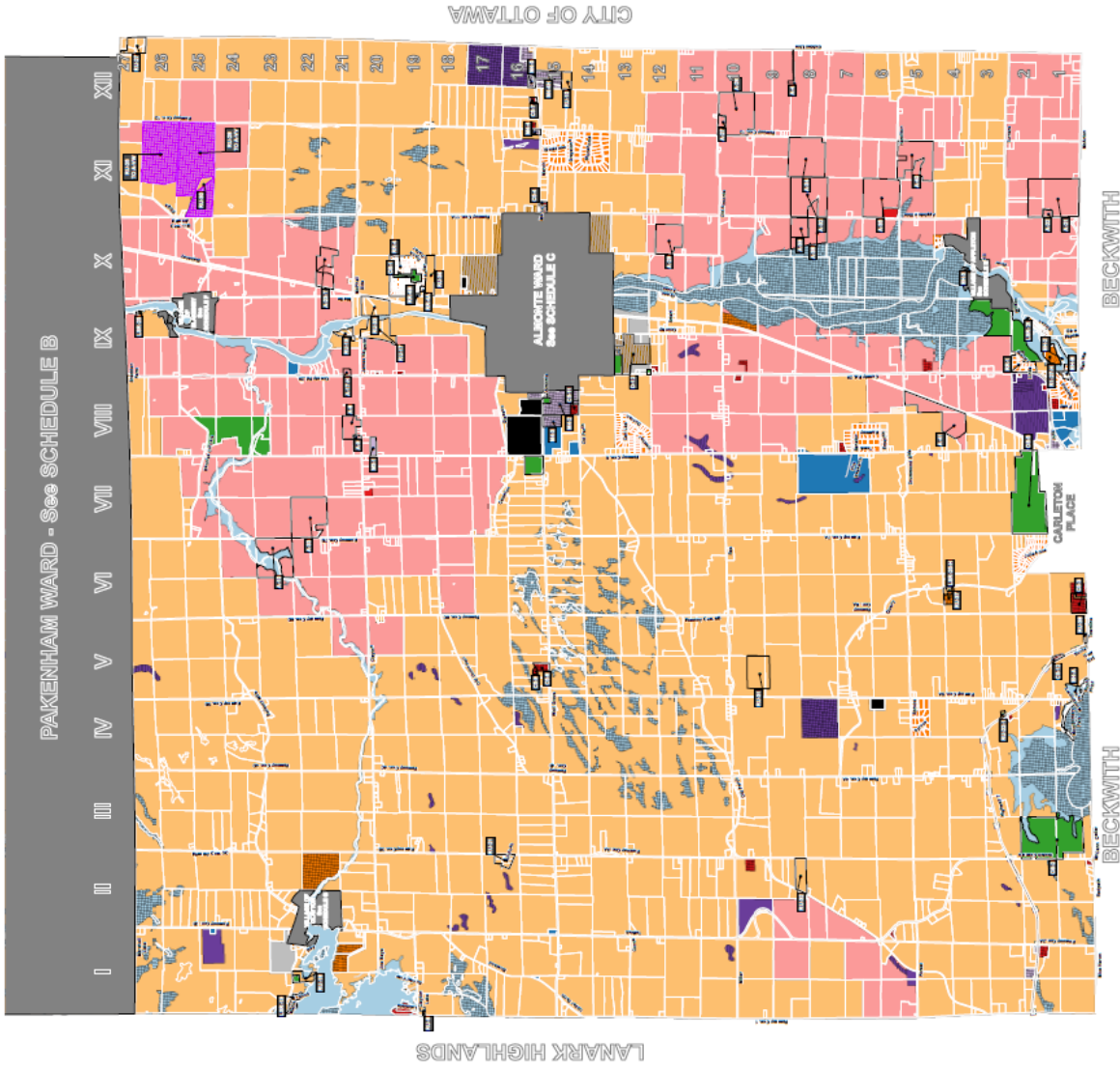
**ZONING BY-LAW No. 11-83**  
Amended: 9 - MAY - 2022

## SCHEDULE A - RAMSAY WARD



### ZONING CLASSIFICATIONS

- AREAS SUBJECT TO OFFICIAL PLAN AMENDMENT 22 UNDER APPEAL
- AGRICULTURAL (A)
- AGRICULTURAL COMMERCIAL (C1)
- RURAL COMMERCIAL (C2)
- TOURIST COMMERCIAL (C3)
- LOCAL COMMERCIAL (C7)
- DEVELOPMENT (D)
- ENVIRONMENTAL HOUSING (EH)
- ENVIRONMENTAL PROTECTION (EP)
- COMMUNITY FACILITY (F)
- AGRICULTURAL INDUSTRIAL (I1)
- RURAL INDUSTRIAL (I4)
- MINERAL AGGREGATE PIT (MP)
- MINERAL AGGREGATE QUARRY (MQ)
- MINERAL AGGREGATE RESERVE (MR)
- PARKLAND & OPEN SPACE (OS)
- RURAL RESIDENTIAL (RR)
- LIMITED SERVICE RESIDENTIAL (LSR)
- RESIDENTIAL FIRST DENSITY (R1)
- RURAL (RU)
- WASTE DISPOSAL (WD)





**ZONING BY-LAW No.11-83**  
Amended: 9 - MAY - 2022

**SCHEDULE B - PAKENHAM WARD**

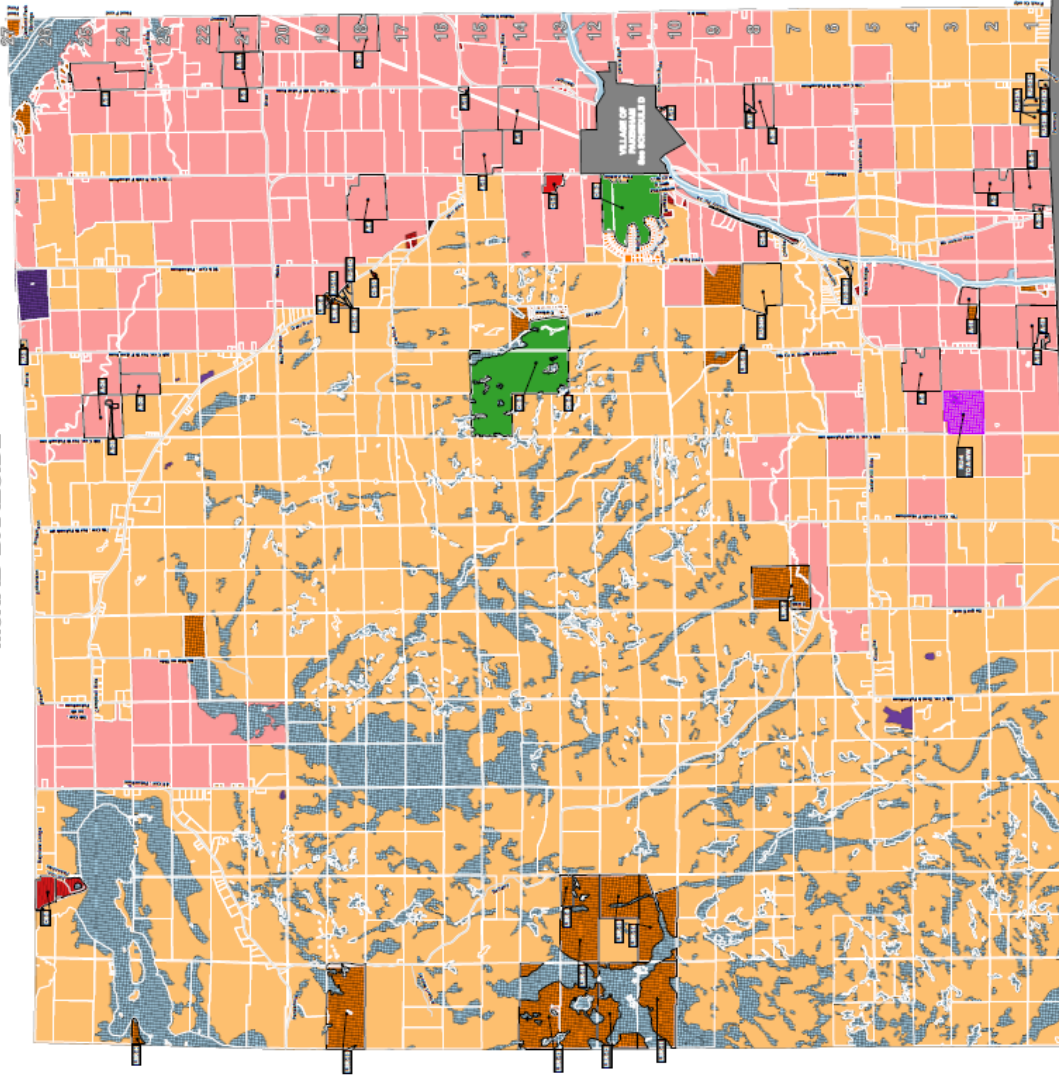
Scale -- 1:22,000



**ZONING CLASSIFICATIONS**

AGRICULTURAL (A)
AGRICULTURAL COMMERCIAL (C1)
RURAL COMMERCIAL (C5)
TOURIST COMMERCIAL (C6)
LOCAL COMMERCIAL (C7)
DEVELOPMENT (D)
ENVIRONMENTAL HAZARD (EH)
ENVIRONMENTAL PROTECTION (EP)
COMMUNITY FACILITY (F)
AGRICULTURAL INDUSTRIAL (I3)
RURAL INDUSTRIAL (I4)
MINERAL AGGREGATE PIT (IP)
MINERAL AGGREGATE QUARRY (IQ)
MINERAL AGGREGATE RESERVE (IR)
PARKLAND & OPEN SPACE (OS)
RURAL RESIDENTIAL (RR)
LIMITED SERVICE RESIDENTIAL (LSR)
RESIDENTIAL FIRST DENSITY (R1)
RURAL (RU)
WASTE DISPOSAL (WD)

McNAB-BRAESIDE



LANARK HIGHLANDS

CITY OF OTTAWA

I II III IV V VI VII VIII IX X XI XII

RAMSAY WARD - See SCHEDULE A

**THE CORPORATION OF THE MUNICIPALITY OF MISSISSIPPI MILLS**

**BY-LAW NO. 22-XXX**

**BEING** a by-law to amend By-law No. 11-83 being the Zoning By-law for the Municipality of Mississippi Mills.

**WHEREAS** the Council of the Corporation of the Municipality of Mississippi Mills passed Zoning Bylaw 11-83, known as the Zoning By-law, to regulate the development and use of lands within the Municipality;

**NOW THEREFORE** the Council of the Corporation of the Municipality of Mississippi Mills pursuant to Section 34 of the *Planning Act*, R.S.O. 1990, Chapter P.13, enacts as follows:

1. That Schedule 'A' to By-law No. 11-83, as amended, is hereby further amended by changing the zoning of the lands shown on the Zoning Schedule A Ramsay Ward and Zoning Schedule B Pakenham Ward and by changing thereon from

RU4 TO AG-WW

Notwithstanding their 'AG' Zoning, on those lands delineated as 'AG-WW' to this By-law a septage disposal use shall be permitted in accordance with the requirements of the Health Unit.

RU-25 TO AG-VW

Notwithstanding the AG zoning, lands designated as AG-VW on Schedule "A" to this by-law, may be used in compliance with the AG zone provisions contained in this by-law, excepting however, that all residential uses are prohibited

RU-28 TO AG-VV

Notwithstanding the 'AG' zoning, those lands designated as AG-VV on Schedule 'A' to this By-law, shall be used in compliance with the AG zone provisions contained in this By-Law, excepting however, that all residential uses shall be prohibited.

2. This By-Law takes effect from the date of passage by Council and comes into force and effect pursuant to the provisions of the *Planning Act*, R.S.O. 1990, Chapter P.13.

**BY-LAW** read, passed, signed and sealed in open Council this **X day of XXX, 20XX.**

---

Christa Lowry, Mayor

---

Jeanne Harfield, Clerk

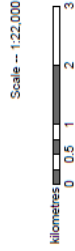
# By-law No. 22-XXX Schedule "A"



ZONING BY-LAW No.11-83  
Amended: 9 - MAY - 2022

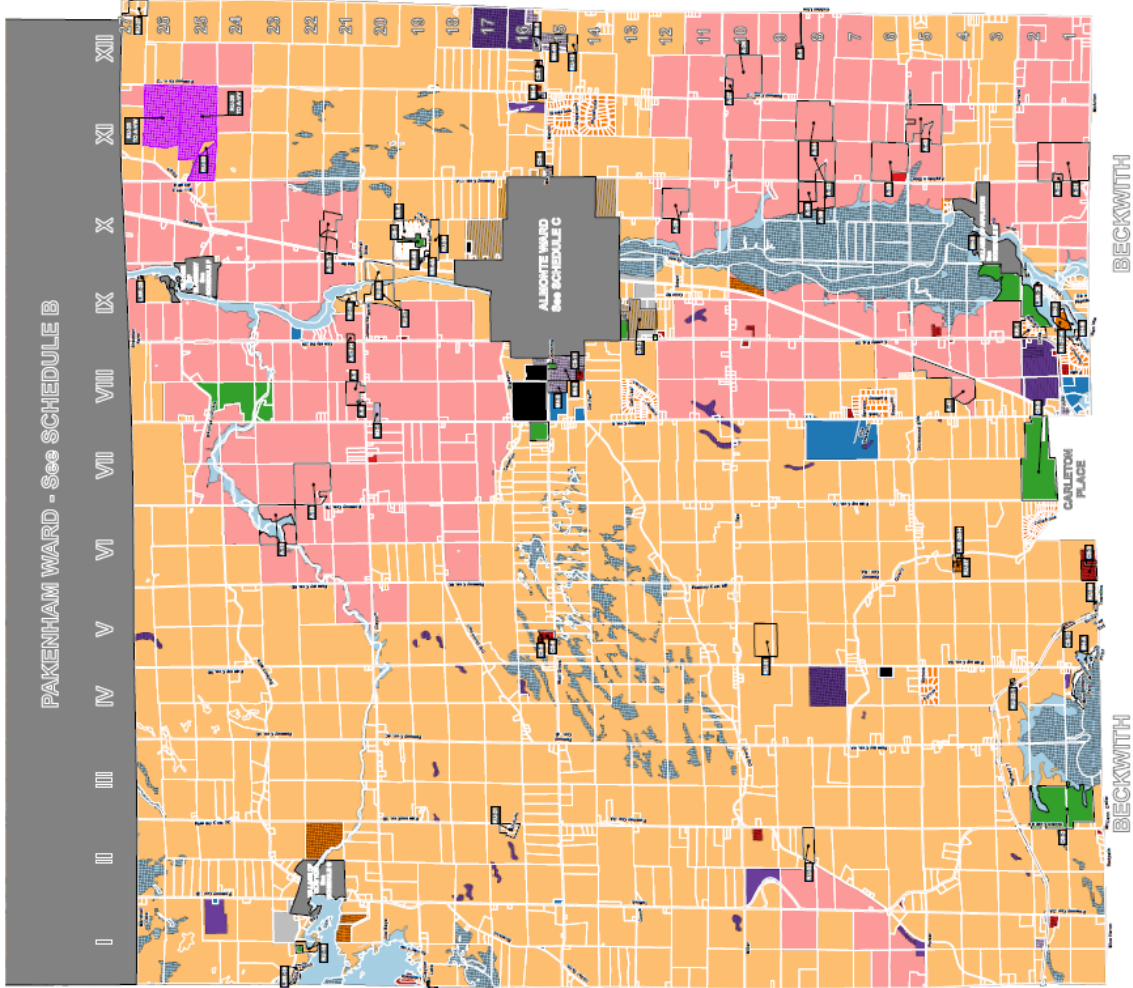
## SCHEDULE A - RAMSAY WARD

Scale - 1:22,000



### ZONING CLASSIFICATIONS

	AREAS SUBJECT TO OFFICIAL PLAN AMENDMENT 21 (UNDER APPLIC)
	AGRICULTURAL (A)
	AGRICULTURAL COMMERCIAL (C1)
	RURAL COMMERCIAL (C2)
	TOURIST COMMERCIAL (C3)
	LOCAL COMMERCIAL (C4)
	DEVELOPMENT (D)
	ENVIRONMENTAL HAZARD (EH)
	ENVIRONMENTAL PROTECTION (EP)
	COMMUNITY FACILITY (F)
	AGRICULTURAL INDUSTRIAL (I1)
	RURAL INDUSTRIAL (I4)
	MINERAL AGGREGATE PIT (MP)
	MINERAL AGGREGATE QUARRY (MQ)
	MINERAL AGGREGATE RESERVE (MR)
	PARKLAND & OPEN SPACE (OS)
	RURAL RESIDENTIAL (RR)
	LIMITED SERVICE RESIDENTIAL (LSR)
	RESIDENTIAL FIRST DENSITY (R1)
	RURAL (RU)
	WASTE DISPOSAL (WD)



CITY OF OTTAWA



**ZONING BY-LAW No.11-83**  
Amended: 9 - MAY - 2022

**SCHEDULE B - PAKENHAM WARD**

Scale -- 1:22,000



**ZONING CLASSIFICATIONS**

[Pink]	AGRICULTURAL (A)
[Red]	AGRICULTURAL COMMERCIAL (CT)
[Dark Red]	RURAL COMMERCIAL (CE)
[Dark Blue]	TOURIST COMMERCIAL (CS)
[Black]	LOCAL COMMERCIAL (CL)
[Light Blue]	DEVELOPMENT (D)
[Dark Blue]	ENVIRONMENTAL HAZARD (EH)
[Light Blue]	ENVIRONMENTAL PROTECTION (EP)
[Light Blue]	COMMUNITY FACILITY (I)
[Light Blue]	AGRICULTURAL INDUSTRIAL (M3)
[Light Blue]	RURAL INDUSTRIAL (M4)
[Light Blue]	MINERAL AGGREGATE PIT (MP)
[Light Blue]	MINERAL AGGREGATE QUARRY (MQ)
[Light Blue]	MINERAL AGGREGATE RESERVE (MR)
[Light Blue]	PARKLAND & OPEN SPACE (OS)
[Light Blue]	RURAL RESIDENTIAL (RR)
[Light Blue]	LIMITED SERVICE RESIDENTIAL (LSR)
[Light Blue]	RESIDENTIAL FIRST DENSITY (R1)
[Light Blue]	RURAL (RU)
[Light Blue]	WASTE DISPOSAL (WD)

